

TECHNICAL MANUAL

**ORGANIZATIONAL,
DIRECT SUPPORT, AND
GENERAL SUPPORT MAINTENANCE
REPAIR PARTS AND SPECIAL TOOLS LIST
(INCLUDING DEPOT MAINTENANCE REPAIR PARTS)**

FOR

**BRIDGE, ARMORED-VEHICLE LAUNCHED:
SCISSORING TYPE
CLASS 60 (5420-00-522-9599)
AND
CLASS 70 (5420-01-370-3933)
ALUMINUM 60 FOOT SPAN;
FOR USE WITH M48 AND M60 LAUNCHER
(ALL MAKES AND MODELS)**

CHANGE
NO. 02

ORGANIZATIONAL,
DIRECT SUPPORT, AND
GENERAL SUPPORT MAINTENANCE
REPAIR PARTS AND SPECIAL TOOLS LIST
(INCLUDING DEPOT MAINTENANCE REPAIR PARTS)

FOR

BRIDGE, ARMORED-VEHICLE LAUNCHED:
SCISSORING TYPE
CLASS 60 (5420-00-522-9599)
AND
CLASS 70 (5420-01-390-3933)
ALUMINUM 60 FOOT SPAN;
FOR USE WITH M48 AND M60 LAUNCHER
(ALL MAKES AND MODELS)

TM5-5420-203-24P, dated 08 November 1988, is changed as follows:

1. Remove old pages and insert new pages as indicated below.
2. New or change material is indicated by an asterisk adjacent to the item number (see page 7, paragraph 5.j.).

Remove Pages

none
i and ii
5 and 6
1-1 thru Figure 3
5-1 and 5-1
none
none
Cover and PIN

Insert Pages

A and B
i and ii
5 and 6
1-1 thru Figure 3
5-1 and Blank
9A-1 and Blank
I-15 and I-16
Cover and PIN

DISTRIBUTION STATEMENT A. Approved for public release; distribution is unlimited.

By Order of the Secretary of the Army:

Official:



JOYCE E. MORROW

*Administrative Assistant to the
Secretary of the Army*

0724203

GEORGE W. CASEY, JR.
*General, United States Army
Chief of Staff*

Distribution:

To be distributed in accordance with the initial distribution number (IDN) 371233 requirements for TM 5-5420-203-24P.

CHANGE
NO. 1

HEADQUARTERS
DEPARTMENT OF THE ARMY
Washington D.C. ,. 10 February 1997

ORGANIZATIONAL
DIRECT SUPPORT, AND
GENERAL SUPPORT MAINTENANCE
REPAIR PARTS AND SPECIAL TOOLS LIST
(INCLUDING DEPCOT MAINTENANCE REPAIR PARTS)
FOR
BR:DGE, ARMORED-VEHICLE LAUNCHED:
SCISSORING TYPE
CLASS 60 (5420-00-522-9599)
AND CLASS 70 (5420-01-390-3933)
ALUMINUM 60 FOOT SPAN;
FOR USE WITH M48 AND M60 LAUNCHER
(ALL MAKES AND MODELS)

TM 5-5420-203-24P, dated 8 November 1988, is changed as follows:

1. Remove old pages and -insert new pages.
2. New or changed text is :indicated by a vertical bar in the margin of the page.
3. Added or revised 1llustrat:ons are indicated by a hand pointing toward new item number.
4. Title and distribution restriction statement has changed.

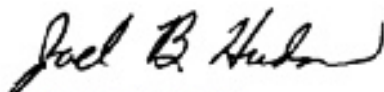
| Remove Pages | Insert Pages | Remove Pages | Insert Pages |
|--------------|--------------|----------------|----------------|
| Page i | Page i | Page 6-1 | Page 6-1 |
| Page ii | Page ii | Figure 7 | Figure 7 |
| Page 1-1 | Page 1-1 | Page 7-1 | Page 7-1 |
| Figure 2 | Figure 2 | Page 7-2 | Page 7-2 |
| Page 2-1 | Page 2-1 | Page 8-1 | Page 8-1 |
| Figure 3 | Figure 3 | Page 8-2 | Page 8-2 |
| Page 3-1 | Page 3-1 | Page 9-1 | Figure 9 |
| Figure 4 | Figure 4 | | Page 9-1 |
| Page 4-1 | Page 4-1 | | |
| Figure 5 | Figure 5 | | |
| Page 5-1 | Page 5-1 | Pages 1-1-1-13 | Pages 1-1-1-14 |
| Figure 6 | Figure 6 | Front Cover | Front Cover |

File this change in front of the publication for reference purposes.

Approved for public release; distribution is unlimited.

By Order of the Secretary of the Army:

Official:



JOEL B. HUDSON
*Administrative Assistant to the
Secretary of the Army*
02935

DENNIS J. REIMER
*General, United States Army
Chief of Staff*

DISTRIBUTION:

To be distributed in accordance with the initial distribution number (IDN) 371233, requirements for TM 5-5420-203-24P.

INSERT LATEST CHANGED PAGES. DESTROY SUPERSEDED DATA.

LIST OF EFFECTIVE PAGES

Dates of issue for original and changed pages are:

Original 08 November 1988
 Change 1 10 February 1997
 Change 2 07 September 2007

TOTAL NUMBER OF PAGES IS 66, TOTAL NUMBER OF FIGURES IS 11,
 CONSISTING OF THE FOLLOWING:

* Zero in this column indicates an original page.

| Page No. | Change No.* | Page No. | Change No.* |
|----------|-------------|-------------------|-------------|
| Cover | 2 | PIN | 2 |
| A Added | 2 | B Added | 2 |
| i | 2 | ii | 2 |
| 1 | 0 | 2 | 0 |
| 3 | 0 | 4 | 0 |
| 5 | 2 | 6 | 2 |
| 7 | 0 | Figure 1 | 0 |
| 1-1 | 2 | Figure 2 | 2 |
| 2-1 | 2 | Figure 3 | 0 |
| 3-1 | 1 | Figure 4 | 1 |
| 4-1 | 1 | Figure 5 | 1 |
| 5-1 | 2 | 5-1 Changed Blank | 2 |
| Figure 6 | 1 | 6-1 | 1 |
| Figure 7 | 0 | 7-1 | 1 |
| 7-2 | 1 | Figure 8 | 0 |
| 8-1 | 1 | 8-2 | 1 |

TM5-5420-203-24P C02

| Page No. | Change No.* | Page No. | Change No.* |
|------------|-------------|-------------|-------------|
| Figure 9 | 1 | 9-1 | 1 |
| 9A-1 Added | 2 | Blank Added | 2 |
| I-1 | 1 | I-2 | 1 |
| I-3 | 1 | I-4 | 1 |
| I-5 | 1 | I-6 | 1 |
| I-7 | 1 | I-8 | 1 |
| I-9 | 1 | I-10 | 1 |
| I-11 | 1 | I-12 | 1 |
| I-13 | 1 | I-14 | 1 |
| I-15 Added | 2 | I-16 Added | 2 |

**ORGANIZATIONAL,
DIRECT SUPPORT, AND
GENERAL SUPPORT MAINTENANCE
REPAIR PARTS AND SPECIAL TOOLS LIST
(INCLUDING DEPOT MAINTENANCE REPAIR PARTS)**

FOR

**BRIDGE, ARMORED-VEHICLE LAUNCHED:
SCISSORING TYPE
CLASS 60 (5420-00-522-9599)
AND
CLASS 70 (5420-01-390-3933)
ALUMINUM 60 FOOT SPAN;
FOR USE WITH M48 AND M60 LAUNCHER
(ALL MAKES AND MODELS)**

Current as of 6 January 2004

REPORTING ERRORS AND RECOMMENDING IMPROVEMENTS

You can help improve this publication. If you find any mistakes or if you know of a way to improve the procedures, please let us know. Submit your DA Form 2028 (Recommended Changes to Publications and Blank Forms), through the Internet, on the Army Electronic Product Support (AEPS) website. The Internet address is <https://aeeps.ria.army.mil>. The DA Form 2028 is located under the Public Applications section in the AEPS Public Home Page. Fill out the form and click on SUBMIT. Using this form on the AEPS will enable us to respond quicker to your comments and better manage the DA Form 2028 program. You may also mail, fax or email your letter or DA Form 2028 direct to: AMSTA-LC-LPIT/TECH PUBS, TACOM-R1, 1 Rock Island Arsenal, Rock Island, IL 61299-7630. The email address is ROCK-TACOM-TECH-PUB@conus.army.mil. The fax number is DSN 793-0726 or Commercial (309) 782-0726.

DISTRIBUTION STATEMENT A. Approved for public release; distribution is unlimited.

TABLE OF CONTENTS

| | PAGE | ILLUS/ FIGURE |
|---|------|------------------|
| SECTION I. INTRODUCTION..... | 1 | |
| SECTION II. REPAIR PARTS LIST..... | 1-1 | |
| GROUP | | |
| 01 HYDRAULIC SYSTEM..... | 1-1 | |
| 01 HYDRAULIC LINES, CYLINDER, AND FITTINGS..... | 1-1 | 1 |
| 0101 HYDRAULIC CYLINDER COMPONENTS (ASSY P/N 13211E7880)..... | 2-1 | 2 |

TABLE OF CONTENTS - Continued

| GROUP | | PAGE | ILLUS/ FIGURE |
|--------------|--|------|------------------|
| 0102 | SCISSORING CYLINDER PIN AND COMPONENT..... | 1-1 | 1 |
| 02 | FRAME..... | 3-1 | 3 |
| 02 | BEAMS, CABLES, AND RELATED PARTS..... | 3-1 | 3 |
| 02 | CENTER PANELS AND RELATED PARTS..... | 4-1 | 4 |
| 02 | END PANELS AND RELATED PARTS..... | 5-1 | 5 |
| 02 | DIAPHRAGM AND RELATED PARTS..... | 6-1 | 6 |
| 0201 | CENTER PANEL COMPONENTS (ASSY P/N 13211E7825 FEMALE)..... | 7-1 | 7 |
| 0202 | CENTER PANEL COMPONENTS (ASSY P/N 13211E7813 MALE)..... | 7-1 | 7 |
| 0203 | QUADRANT ASSEMBLY AND COMPONENTS..... | 4-1 | 4 |
| 0204 | END PANEL COMPONENTS (ASSY P/N 13211E7843 FEMALE)..... | 8-1 | 8 |
| 0205 | END PANEL COMPONENTS (ASSY P/N 13211E7837 MALE)..... | 8-1 | 8 |
| 0206 | RAMP, TIE ROD ASSEMBLY AND COMPONENTS..... | 5-1 | 5 |
| 0207 | QUICK DISCONNECT AND COMPONENTS..... | 6-1 | 6 |
| 020701 | QUICK DISCONNECT BRACKET AND COMPONENTS..... | 6-1 | 6 |
| 03 | FRAME..... | 9-1 | 9 |
| 03 | MLC 70 AVLB..... | 9-1 | 9 |
| 94 | REPAIR PARTS KITS AND SETS..... | 9A-1 | 9A |
| 9401 | REPAIR PARTS KITS..... | 9A-1 | 9A |
| 9401 | (LISTED NUMERICALLY BY PART NUMBER)..... | 9A-1 | 9A |
| SECTION III. | SPECIAL TOOLS LIST..... | NONE | |
| SECTION IV. | CROSS-REFERENCE INDEXES C01..... | I-1 | |
| | NATIONAL STOCK NUMBER INDEX..... | I-1 | |
| | PART NUMBER INDEX..... | I-4 | |
| | FIGURE AND ITEM NUMBER INDEX..... | I-10 | |
| | SUPPLEMENTAL CROSS-REFERENCE INDEXES C02..... | I-15 | |
| | NATIONAL STOCK NUMBER INDEX | I-15 | |
| | PART NUMBER INDEX..... | I-16 | |

ORGANIZATIONAL
DIRECT SUPPORT, AND
GENERAL SUPPORT MAINTENANCE
REPAIR PARTS AND SPECIAL TOOLS LIST
SECTION I INTRODUCTION

1. Scope.

This RPSTL lists and authorizes spares, repair parts required for performance of organizational, direct support, and general support maintenance of the Bridge. It authorizes the requisitioning, issue, and disposition of spares, repair parts and special tools as indicated by the Source, Maintenance, and Recoverability (SMR) codes.

2. General.

In addition to Section I, Introduction this Repair Parts and Special Tools List is divided into the following sections:

a. Section II. Repair Parts List. A list of spares and repair parts authorized by this RPSTL for use in the performance of maintenance. The list also includes parts which must be removed for replacement of the authorized parts. Parts lists are composed of fictional groups in ascending alphanumeric sequence, with the parts in each group listed in ascending figure and item number sequence. Items listed are shown on the associated illustration(s)/ figure(s).

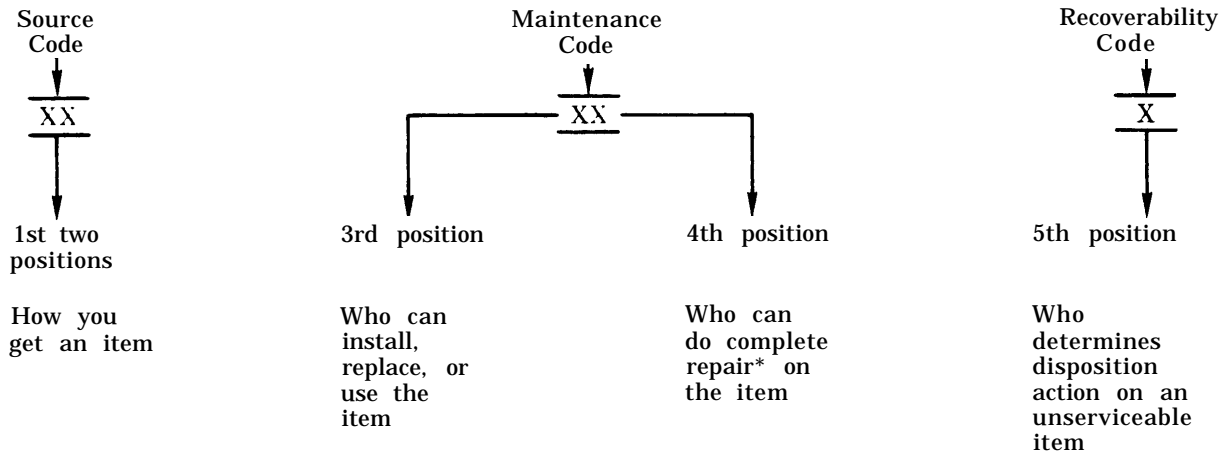
b. Section III. Special Tools List. Not applicable.

c. Section IV. Cross-reference Index. A list, in National Item Identification Number (NIIN) sequence, of all National stock numbered items appearing in the listing, followed by a list in alphanumeric sequence of all part numbers appearing in the listings. National stock numbers and part numbers are cross-referenced to each illustration figure and item number appearance. The figure and item number index lists figure and item numbers in alphanumeric sequence and cross-reference NSN, FSCM and part numbers.

3. Explanation of Columns (Section II).

a. ITEM NO. (Column (1)). Indicates the number used to identify items called out in the illustration

b. SMR CODE (Column (2)) The Source, Maintenance, and Recoverability (SMR) code is a 5-position code containing supply/ requisitioning information, maintenance level authorization criteria, and disposition instruction, as shown in the following breakout



*Complete Repair Maintenance capacity, capability, and authority to perform all corrective maintenance tasks of the "Repair" function in a use/user environment in order to restore serviceability to a failed item.

(1) Source Code. The source code tells you how to get an item needed for maintenance, repair, or overhaul of an end item/equipment. Explanations of source codes follow:

| Code | Explanation |
|--|---|
| PA PB PC** PD PE PF PG | Stocked items; use the applicable NSN to request/requisition items with these source codes. They are authorized to the level indicated by the code entered in the 3rd position of the SMR code. ** NOTE Items coded PC are subject to deterioration |
| KD KF KB | Items with these codes are not to be requested/requisitioned individually. They are part of a kit which is authorized to the maintenance level indicated in the 3rd position of the SMR code. The complete kit must be requisitioned and applied. |
| MO - (Made at Org Level) MF - (Made at DS Level) MH - (Made at GS Level) MD - (Made at Depot) | Items with these codes are not to be requested/requisitioned individually. They must be made from bulk material which is identified by the part number in the DESCRIPTION AND USABLE ON CODE (UOC) column and listed in the Bulk Material group of the repair parts list in this RPSTL. If the item is authorized to you by the 3rd position code of the SMR code, but the source code indicates it is made at a higher level, order the item from the higher level of maintenance. |

| | |
|------|-------------|
| Code | Explanation |
|------|-------------|

| |
|-------------------------------|
| AO - (Assembled by Org Level) |
|-------------------------------|

| |
|------------------------------|
| AF - (Assembled by DS Level) |
|------------------------------|

| |
|------------------------------|
| AH - (Assembled by GS Level) |
|------------------------------|

| |
|---------------------------|
| AD - (Assembled by Depot) |
|---------------------------|

Items with these codes are not to be requested/requisitioned individually. The parts that make up the assembled item must be requisitioned or fabricated and assembled at the level of maintenance indicated by the source code. If the 3rd position code of the SMR code authorizes you to replace the item, but the source code indicates the item is assembled at a higher level, order the item from the higher level of maintenance.

XA - Do not requisition an "XA" -coded item. Order its next higher assembly. (Also, refer to the NOTE below).

XB - If an "XB" item is not available from salvage, order it using the FSCM and part number given.

XD - Item is not stocked. Order an "XD" -coded item through normal supply channels using the FSCM and part number given, if no NSN is available.

NOTE Cannibalization or cent rolled exchange, when authorized, may be used as a source of supply for items with the above source codes, except for those source coded "XA".

(2) Maintenance Code. Maintenance codes tell you the level(s) of maintenance authorized to USE and REPAIR support items. The maintenance codes are entered in the third and fourth positions of the SMR Code as follows:

(a) The maintenance code entered in the third position tells you the lowest maintenance level authorized to remove, replace, and use an item. The maintenance code entered in the third position will indicate authorization to one of the following levels of maintenance.

| | |
|------|-------------------------|
| Code | Application/Explanation |
|------|-------------------------|

C - Crew or operator maintenance done within organizational maintenance.

O - Organizational level can remove, replace, and use the item.

F - Direct support level can remove, replace, and use the item.

H - General support level can remove, replace, and use the item.

D - Depot level can remove, replace, and use the item.

(b) The maintenance code entered in the fourth position tells whether or not the item is to be repaired and identifies the lowest maintenance level with the capability to do complete repair (i.e., perform all authorized repair functions). (NOTE: Some limited repair may be done on the item at a lower level of maintenance, if authorized by the Maintenance Allocation Chart (MAC) and SMR codes.) This position will contain one of the following maintenance codes.

| Code | Application/ Explanation |
|------|--|
| O - | Organizational is the lowest level that can do complete repair of the item. |
| F - | Direct support is the lowest level that can do complete repair of the item. |
| H - | General support is the lowest level that can do complete repair of the item. |
| D - | Depot is the lowest level that can do complete repair of the item. |
| Z - | Nonreparable. No repair is authorized. |
| B - | No repair is authorized. (No parts or special tools are authorized for the maintenance of a "B" coded item.) However, the item may be reconditioned by adjusting, lubricating, etc., at the user level. |

(3) Recoverability Code. Recoverability codes are assigned to items to indicate the disposition action on unserviceable items. The recoverability code is entered in the fifth position of the SMR Code as follows:

| Recoverability Codes | Application/Explanation |
|----------------------|---|
| Z - | Nonreparable item. When unserviceable, condemn and dispose of the item at the level of maintenance shown in 3rd position of SMR Code. |
| O - | Reparable item. When uneconomically repairable, condemn and dispose of the item at organizational level. |
| F - | Reparable item. When uneconomically repairable, condemn and dispose of the item at the direct support level. |
| H - | Reparable item. When uneconomically repairable, condemn and dispose of the item at the genera 1 support level. |
| D - | Reparable item. When beyond lower level repair capability, return to depot. Condemnation and disposal of item not authorized below depot level. |
| A - | Item requires special handling or condemnation Procedures because of specific reasons (e.g., precious metal content, high dollar value, critical material, or hazardous material). Refer to appropriate manuals/directives for specific instructions. |

c. FSCM (Column(3)). The Federal Supply Code for Manufacturer (FSCM) is a 5-digit numeric code which is used to identify the manufacturer, distributor, or Government agency, etc., that supplies the item.

d. PART NUMBER (Column (4)). Indicates the primary number used by the manufacturer (individual, company, firm, corporation or Government activity), which controls the design and characteristics of the item by means of its engineering drawings, specifications standards, and inspection requirements to identify an item or range of items.

NOTE When you use an NSN to requisition an item, the item you receive may have a different part number from the part ordered.

e. DESCRIPTION AND USABLE ON CODE (UOC) (Column (6)). This column includes the following information:

- (1) The Federal item name and, when required, a minimum description to identify the item.
- (2) The physical security classification is not applicable.
- (3) Line item entries for repair parts kits and maintenance kits appear in groups in Section II (See Table of Contents).
- (4) Spare / repair parts that make up an assembled item are listed immediately following the assembly line item entry.
- (5) Part number for bulk materials are not applicable.
- (6) Serial number effectivity is not applicable.
- (7) The usable on code is not applicable.
- (8) Basis of issue (BOI) is not applicable.
- (9) The statement "END OF FIGURE" appears just below the last item description in Column 6 for a given figure in Section II.

f. QTY (Column (7)). The QTY (quantity per figure column) indicates the quantity of the item used in the breakout shown on the illustration figure, which is prepared for a functional group, subfunctional group, or an assembly. A "V" appearing in this column in lieu of a quantity indicates that the quantity is variable and the quantity may vary from application to application.

4. Explanation of Columns (Section IV).

a. NATIONAL STOCK NUMBER (NSN) INDEX.

(1) STOCK NUMBER column. This column lists the NSN by National Item Identification Number (NIIN) sequence. The NIIN consists of the last nine digits of the NSN, i.e.:

NSN 5305-01-674-1467 NIIN 01-674-1467

When using this column to locate an item, ignore the first 4 digits of the NSN. However, the complete NSN should be used when ordering items by stock number.

(2) FIG. Column. This column lists the number of the figure where the item is identified / located. The figures are in numerical order in Section II.

(3) ITEM column. The item number identifies the item associated with the figure listed in the adjacent FIG. column. This item is also identified by the NSN listed on the same line.

b. PART NUMBER INDEX. Part numbers in this index are listed by part number in ascending alphanumeric sequence (i.e., vertical arrangement of letter and number combination which places the first letter or digit of each group in order A through Z, followed by the numbers 0 through 9 and each following letter or digit in like order).

(1) FSCM column. The Federal Supply Code for Manufacturer (FSCM) is a 5-digit numeric code used to identify the manufacturer, distributor, or Government agency, etc., that supplies the item.

(2) PART NUMBER column. Indicates the primary number used by the manufacturer (individual, firm, corporation, or Government activity), which controls the design and characteristics of the item by means of its engineering drawings, specifications standards, and inspection requirements to identify an item or range of items.

(3) STOCK NUMBER column. This column lists the NSN for the associated part number and manufacturer identified in the PART NUMBER and CAGEC columns to the left.

(4) FIG. column. This column lists the number of the figure where the item is identified / located in Section II and III.

(5) ITEM column. The item number is that number assigned to the item as it appears in the figure referenced in the adjacent figure number column.

c. FIGURE AND ITEM NUMBER INDEX

(1) FIG. column. This column lists the number of the figure where the item is identified / located in Section II and III.

(2) ITEM column. The item number is that number assigned to the item as it appears in the figure referenced in the adjacent figure number column.

(3) STOCK NUMBER column. This column lists the NSN for the item.

(4) FSCM column. The Federal Supply Code for Manufacturer (FSCM) is a 5-digit numeric code used to identify the manufacturer, distributor, or Government agency, etc., that supplies the item.

(5) PART NUMBER column. Indicates the primary number used by the manufacturer (individual, firm, corporation, or Government activity), which controls the design and characteristics of the item by means of its engineering drawings, specifications standards, and inspection requirements to identify an item or range of items.

5. Special Information.

a. USABLE ON CODE. Not applicable.

b. FABRICATION INSTRUCTIONS. Not applicable.

c. ASSEMBLY INSTRUCTIONS. Detailed assembly instructions for items source coded to be assembled from component spare / repair parts are found in TM5-5420-203-14 manual. Items that make up the assembly are listed immediately following the assembly item entry or reference is made to an applicable figure.

d. KITS. Line item entries for repair parts kits appear as the last entries in the figure where kit parts are listed as repair parts.

e. INDEX NUMBERS. Not applicable.

f. ASSOCIATED PUBLICATIONS.

The following publications pertain to the Bridge and its components.

| <u>Publication</u> | <u>Short Title</u> |
|--------------------|----------------------------------|
| TM 5-5420-203-14 | Bridge, Armored-Vehicle Launched |

g. ILLUSTRATIONS - LISTING. Not applicable.

h. ITEMS IN PARENTHESES. Item numbers appearing in parentheses, i.e., (8), signify components that are supplied only as part of the item having the same number or indicate continuation of an item.

i. FIGURE ASSEMBLY PART NUMBER. The next higher assembly part number for component parts listed is shown in parentheses.

EXAMPLE: (ASSY P/N 13211E7880)

j. CHANGE PAGE INFORMATION. An asterisk in the left hand margin (before the item number) indicates a change has occurred in at least one of the columns for that item.

6. How to Locate Repair Parts.

a. When National Stock Number or Part Number is Not Known.

(1) First. Using the table of contents, determine the assembly group or subassembly group to which the item belongs. This is necessary since figures are prepared for assembly groups and subassembly groups, and listings are divided into the same groups.

(2) Second. Find the figure covering the assembly group or subassembly group to which the item belongs.

(3) Third. Identify the item on the figure and use the Figure and Item Number Index to find the NSN.

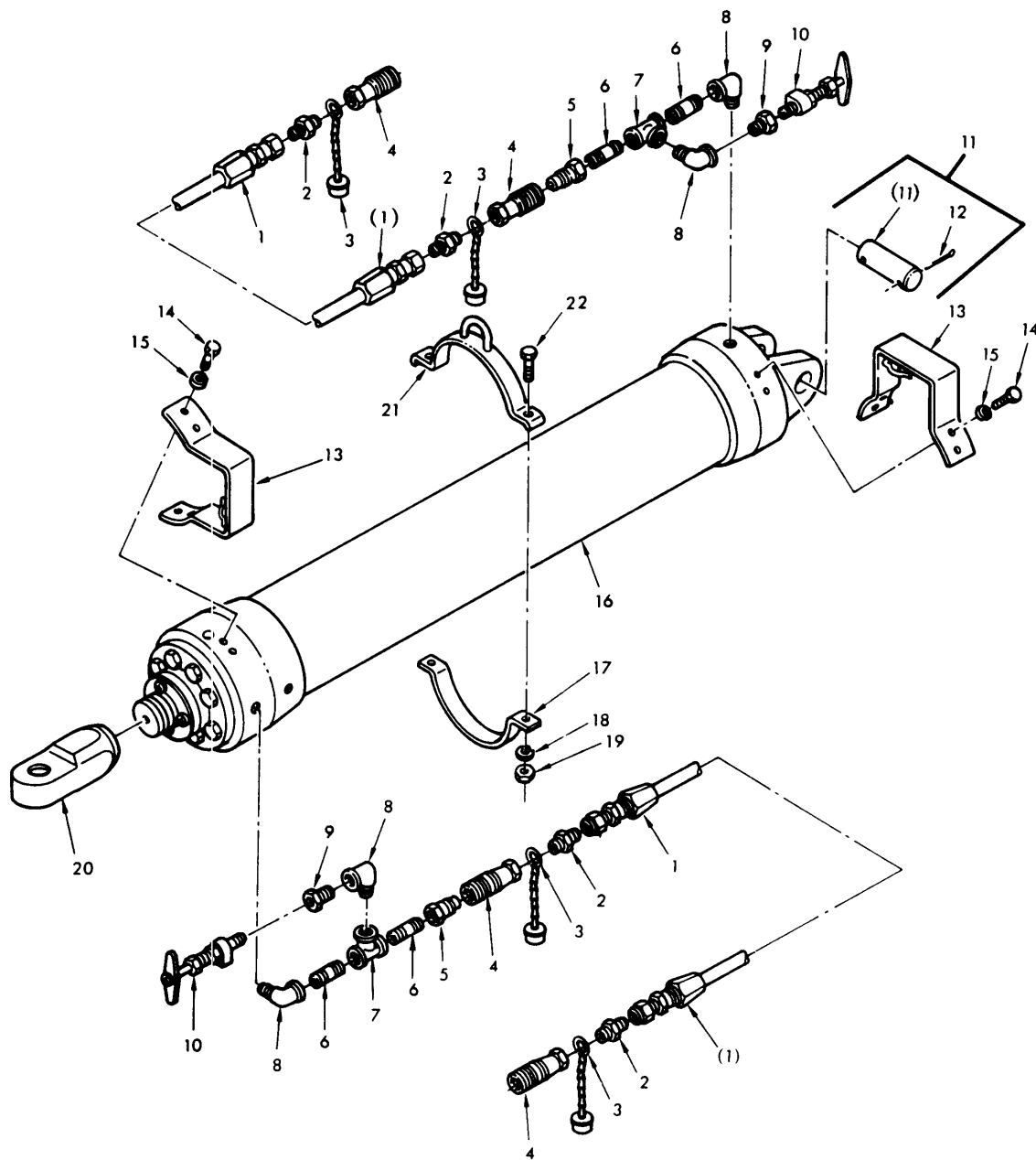
b. When National Stock Number or Part Number is Known

(1) First. Using the National Stock Number or the Part Number index find the pertinent National Stock Number or Part Number. The NSN index is in National Item Identification Number (NIIN) sequence (see 4a. (1)). The part numbers in the Part Number index are listed in ascending alphanumeric sequence (see 4.b.). Both indexes cross-reference you to the illustration figure and item number of the item you are looking for.

(2) Second. Turn to the figure and item number, verify that the item is the one you are looking for, then locate the item number in the repair parts list for the figure.

7. Abbreviations.

| <u>Abbreviations</u> | <u>Explanations</u> |
|----------------------|-------------------------------------|
| P/N | Part Number |
| RPSTL | Repair Parts and Special Tools List |



SB001

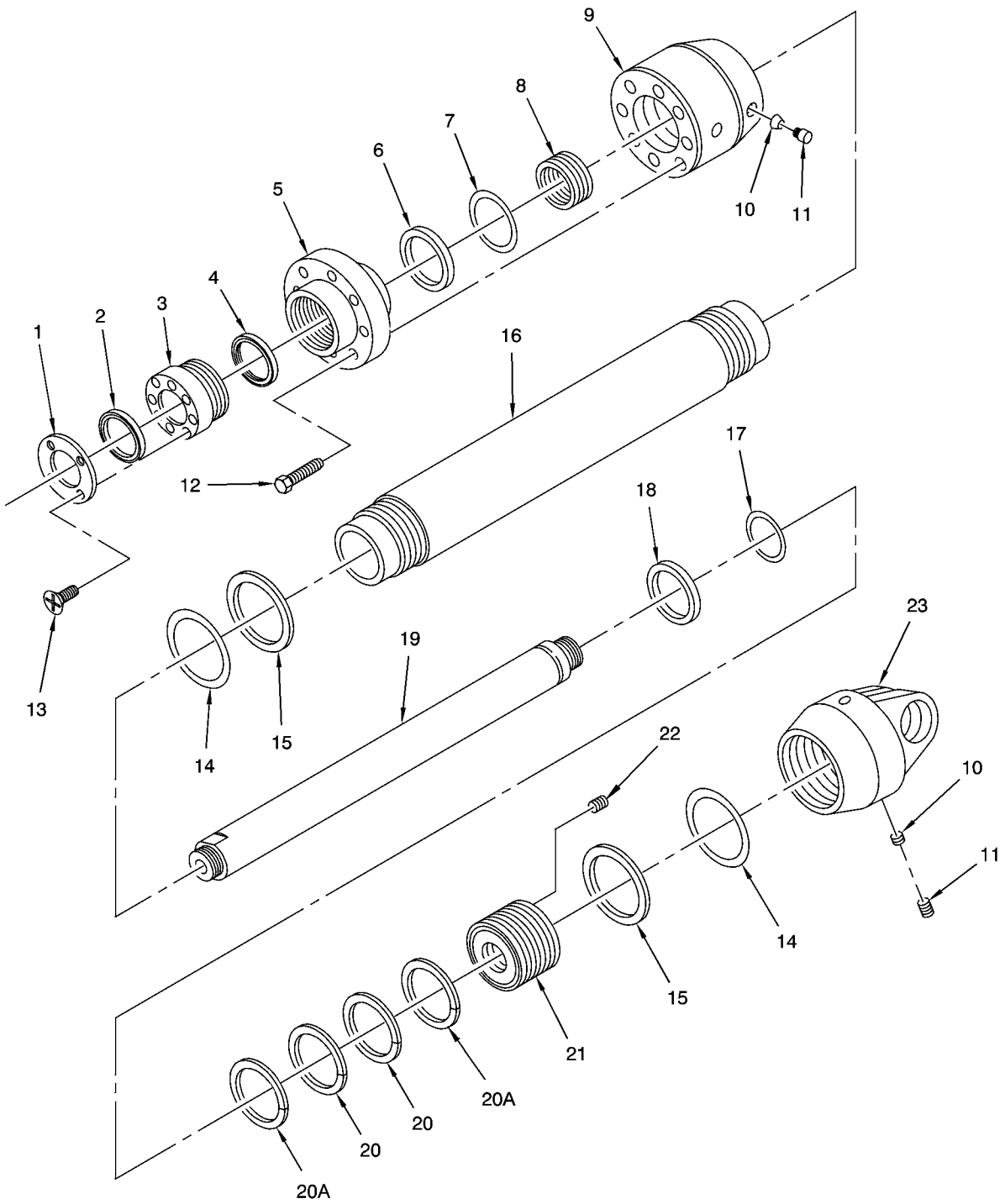
FIGURE 1. HYDRAULIC LINES, CYLINDER, AND FITTINGS

SECTION II

TM5-5420-203-24P C02

| (1) ITEM NO. | (2) SMR CODE | (3) NSN | (4) CAGEC | (5) PART NUMBER | (6) DESCRIPTION AND USABLE ON CODES(UOC) | (7) QTY |
|--|--------------------|------------------------|--------------|-----------------------|--|------------|
| GROUP 01: HYDRAULIC SYSTEM | | | | | | |
| FIG.1 HYDRAULIC LINES, CYLINDER, AND FITTINGS | | | | | | |
| * | 1 | PAOZZ 4720-00-732-3418 | 97907 | 981089 | HOSE ASSEMBLY,RUBBE | 2 |
| | 2 | PAOZZ 4730-00-202-8469 | 96906 | MS51500A12 | ADAPTER,STRAIGHT,PI | 4 |
| | 3 | PAOZZ 5420-00-816-5649 | 97403 | 13211E7831 | CAP ASSEMBLY HYDRAU | 4 |
| | 4 | PAOZZ 4730-00-257-0236 | 97403 | 13211E3213 | COUPLING HALF,QUICK | 4 |
| | 5 | PAOZZ 4730-00-182-9086 | 97403 | 13211E3212 | COUPLING HALF,QUICK | 2 |
| | 6 | PAOZZ 4730-00-277-9457 | 81348 | WWN351TYPEB | PIPE | 4 |
| * | 7 | PAOZZ 4730-01-009-0981 | 81343 | 12-12-12 140438S | TEE,PIPE | 2 |
| * | 8 | PAOZZ 4730-00-203-0030 | 21450 | 454112 | ELBOW,PIPE | 4 |
| * | 9 | PAOZZ | 97403 | 13211E7905-14 | PIPE FITTING | 2 |
| | 10 | PAOZZ 4820-00-249-4203 | 97403 | 13211E7842 | VALVE,ANGLE | 2 |
| | 11 | PBOOO 5420-00-542-3157 | 97403 | 13211E7873 | PIN,CYLINDER,SCISSO (GROUP 0102) | 1 |
| | 12 | PAOZZ 5315-00-597-7399 | 96906 | MS24665-631 | .PIN,COTTER | 2 |
| * | 13 | PAOZZ 5420-00-182-8639 | 97403 | 13211E7892 | SHIELD ASSEMBLY | 2 |
| * | 14 | PAOZZ 5305-00-226-7767 | 96906 | MS90726-109 | SCREW,CAP,HEXAGON H | 8 |
| * | 15 | PAOZZ 5310-00-584-5272 | 80205 | MS35338-48 | WASHER,LOCK | 8 |
| * | 16 | PAOFD 5420-01-104-9108 | 97403 | 13211E7880 | CYLINDER,HYDRAULIC (FOR COMPONENT PARTS SEE GROUP 0101) | 1 |
| * | 16 | PAOFD 3040-01-104-9108 | 97403 | 13211E7880-1 | CYLINDER,HYDRAULIC (FOR COMPONENT PARTS SEE GROUP 0101) | 1 |
| | 17 | PAOZZ 5340-01-145-1968 | 97403 | 13211E7939 | STRAP,RETAINING LOWER | 1 |
| | 18 | PAOZZ 5310-00-584-7888 | 96906 | MS35338-51 | WASHER,LOCK | 2 |
| | 19 | PAOZZ 5310-00-763-8921 | 96906 | MS51967-23 | NUT,PLAIN,HEXAGON | 2 |
| * | 20 | PBOZZ 5340-00-542-3156 | 97403 | 13211E7874 | CLEVIS,CYLINDER,SCI | 1 |
| * | 21 | PAOZZ 5420-00-542-3192 | 97403 | 13211E7935 | BRACKET ASSEMBLY,CY UPPER | 1 |
| * | 22 | PAOZZ 5305-00-947-4353 | 80204 | B1821BH075C275N | SCREW,CAP,HEXAGON,H | 2 |

END OF FIGURE



SB002R1

FIGURE 2. HYDRAULIC CYLINDER COMPONENTS
(ASSY P/N 13211E7880 AND 13211E7880-1)

SECTION II

TM5-5420-203-24P C02

| (1) ITEM NO. | (2) SMR CODE | (3) NSN | (4) CAGEC | (5) PART NUMBER | (6) DESCRIPTION AND USABLE ON CODES(UOC) | (7) QTY |
|--|--------------------|------------------|--------------|-----------------------|---|------------|
| GROUP 0101 | | | | | | |
| FIG.2 HYDRAULIC CYLINDER COMPONENTS (ASSY P/N 13211E7880 AND 13211E7880-1) | | | | | | |
| * | 1 PAFZZ | 5420-01-121-1549 | 97403 | 13211E7871 | PLATE,RETAINING,SHA..... | 1 |
| * | 2 KFFZZ | | 96906 | MS28776M2-41 | RING,WIPER PART OF KIT P/N 13228E1971..... | 1 |
| * | 3 PAFZZ | 5420-00-689-3127 | 97403 | 13211E7868 | BUSHING CYLINDER..... | 1 |
| * | 4 PAFZZ | 2590-00-606-4474 | 97403 | 13211E3144-4 | RING,WIPER STEEL BRIDGE..... | 1 |
| * | 4 KFFZZ | | 19207 | 12326514-3 | RING,WIPER ALUMINUM BRIDGE PART OF KIT P/N 13228E1971..... | 1 |
| * | 5 PBFZZ | 5420-01-045-3562 | 97403 | 13214E0033-1 | FLANGE,LAND RING STEEL BRIDGE..... | 1 |
| * | 5 PAFZZ | 5420-01-045-3562 | 97403 | 13214E0033-1 | FLANGE,LAND RING ALUMINUM BRIDGE..... | 1 |
| * | 6 KFFZZ | | 96906 | MS27595-441 | SPACER,RING PART OF KIT P/N 13228E1971..... | 1 |
| * | 7 PAFZZ | 5330-00-579-9675 | 96906 | MS28775-441 | PACKING,PREFORMED STEEL BRIDGE..... | 1 |
| * | 7 KFFZZ | | 81349 | M83248/1-441 | O-RING ALUMINUM BRIDGE PART OF KIT P/N 13228E1971..... | 1 |
| * | 8 PAFZZ | 5330-00-450-6605 | 97403 | 13211E3142-4 | PACKING ASSEMBLY STEEL BRIDGE..... | 1 |
| * | 8 KFFZZ | | 19207 | 12326493-3 | PACKING ASSEMBLY ALUMINUM BRIDGE PART OF KIT P/N 13228E1971..... | 1 |
| * | 9 PADZZ | 5420-00-235-4684 | 97403 | 13211E7876 | CYLINDER HEAD,LAUNC..... | 1 |
| * | 10 PAFZZ | 5340-00-872-7696 | 97403 | 13211E3147 | PLUG,PROTECTIVE,DUS..... | 2 |
| * | 11 PAFZZ | 5305-01-038-8424 | 97403 | 13211E7880-8 | SETSCREW STEEL BRIDGE..... | 2 |
| * | 11 PAFZZ | 5305-00-997-4152 | 88044 | AN565D4L3 | SETSCREW ALUMINUM BRIDGE..... | 2 |
| * | 12 PAFZZ | 5305-00-958-8427 | 96906 | MS90726-209 | SCREW,CAP,HEXAGON H..... | 8 |
| * | 13 PAFZZ | 5305-00-993-1849 | 96906 | MS35207-259 | SCREW,MACHINE..... | 4 |
| * | 14 PADZZ | 5330-00-618-4602 | 96906 | MS28775-451 | PACKING,PREFORMED STEEL BRIDGE..... | 2 |
| * | 14 KFFZZ | | 81349 | M83248/1-451 | O-RING ALUMINUM BRIDGE PART OF KIT P/N 13228E1971..... | 2 |
| * | 15 KFFZZ | | 96906 | MS27595-451 | RETAINER,PACKING PART OF KIT P/N 13228E1971..... | 2 |
| * | 16 PADZZ | 5420-00-449-7172 | 97403 | 13214E0023-4 | CYLINDER,ACTUATING..... | 1 |
| * | 17 PADZZ | 5330-00-729-6632 | 96906 | MS28775-244 | PACKING,PREFORMED STEEL BRIDGE..... | 2 |
| * | 17 KFFZZ | | 81349 | M83248/1-244 | O-RING ALUMINUM BRIDGE PART OF KIT P/N 13228E1971..... | 1 |
| * | 18 PADZZ | 5330-01-128-5202 | 96906 | MS27595-244 | RETAINER,PACKING..... | 2 |
| * | 19 PADZZ | 5420-00-186-3405 | 97403 | 13211E7867 | ROD,PISTON,LINEAR A..... | 1 |
| * | 20 PADZZ | 5420-00-606-4396 | 97403 | 13211E3121-4 | RING,PISTON STEEL BRIDGE..... | 4 |
| * | 20 KFFZZ | | 19207 | 12326495-3 | RING,PISTON ALUMINUM BRIDGE PART OF KIT P/N 13228E1971..... | 2 |
| * | 20A KFFZZ | | 81349 | M83248/1-447 | O-RING PART OF KIT P/N 13228E1971..... | 2 |
| * | 21 PADZZ | 5420-01-120-3020 | 97403 | 13214E0025-2 | PISTON,BRIDGE,LAUNC..... | 1 |
| * | 22 PADZZ | 5305-01-340-1094 | 96906 | MS51966-88 | SETSCREW..... | 1 |
| * | 23 PADZZ | 5420-01-121-1608 | 97403 | 13211E7875 | CAP,CYLINDER..... | 1 |

END OF FIGURE

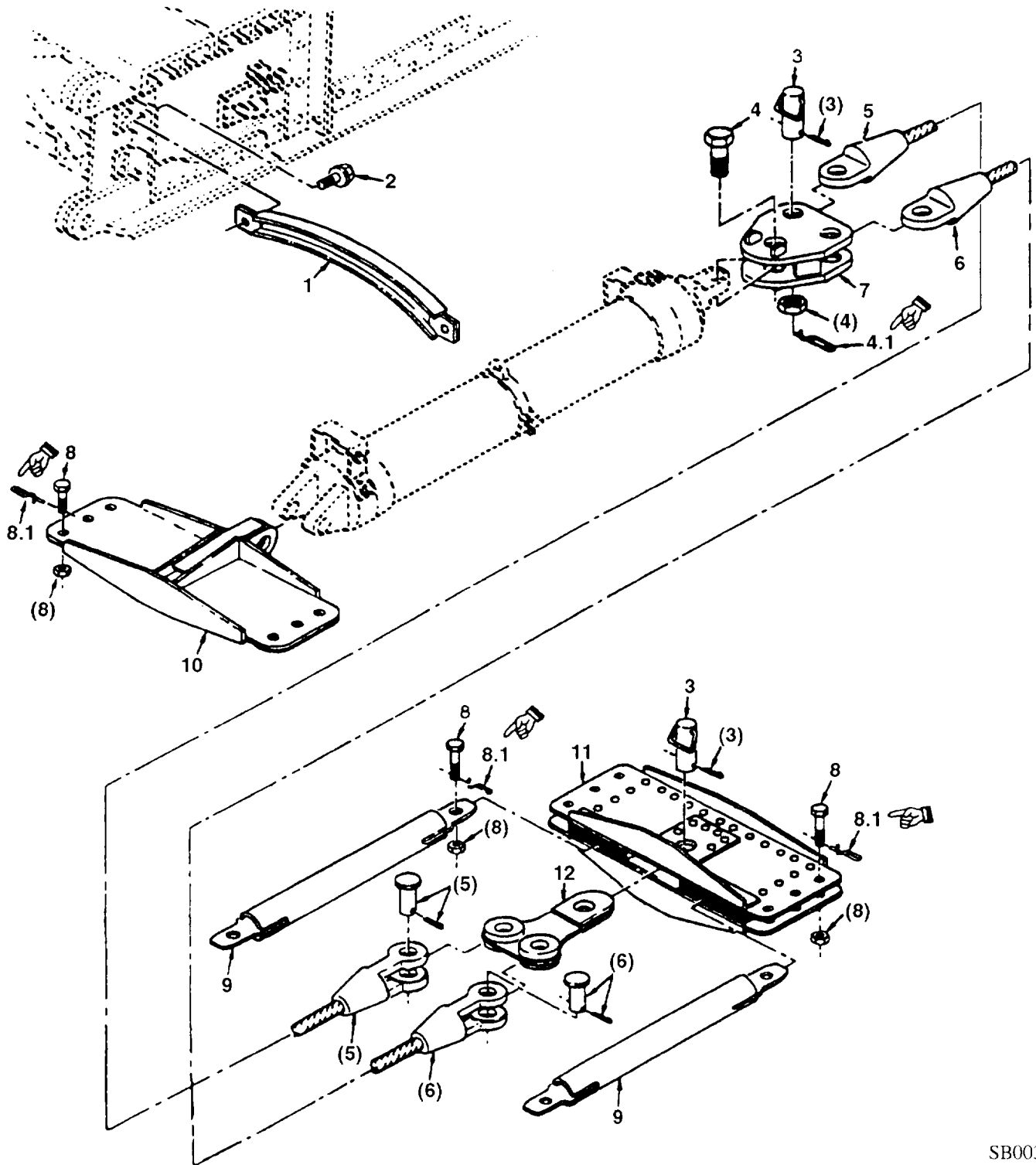


FIGURE 3. BEAMS, CABLES, AND RELATED PARTS

| (1) ITEM NO | SECTION II (2) SMR CODE | (3) NSN | (4) CAGEC | TM 5-5420-203-24P C01 (5) PART NUMBER | (6) DESCRIPTION AND USABLE ON CODES (UDC) | (7) QTY |
|---|----------------------------------|------------------|--------------|--|--|------------|
| GROUP 02: FRAME | | | | | | |
| FIG. 3 BEAMS, CABLES, AND RELATED PARTS | | | | | | |
| 1 | PBOZZ | 5420-00-542-3151 | 97403 | 13211E7851 | SUPPORT, CYLINDER | 2 |
| 2 | PAOZZ | 5306-00-542-3126 | 97403 | 13211E7898 | BOLT, ASSEMBLED WASH | 4 |
| 3 | PBOZZ | 5420-00-542-3137 | 97403 | 13211E7890 | PIN, EQUALIZER PLATE | 2 |
| 4 | PAOZZ | 5420-00-542-3143 | 97403 | 13211E7931 | BOLT, SOCKET | 2 |
| 4.1 | PAOZZ | 5420-00-060-7032 | 81349 | MIL452243 | PIN, RETAINING, 7 13/16" LONG | 2 |
| 5 | PAOZZ | 5420-00-542-3141 | 97403 | 13211E7893 | CABLE, QUADRANT | 1 |
| 6 | PAOZZ | 5420-00-542-3140 | 97403 | 13211E7903 | CABLE, SCISSORING L..... | 1 |
| 7 | PBOZZ | 5420-00-542-3138 | 97403 | 13211E7883 | PLATE, EQUALIZER | 1 |
| 8 | PAOZZ | 5420-00-542-3145 | 97403 | 13211E7926 | BOLT, BRIDGE..... | 16 |
| 8.1 | PAOZZ | 5420-00-060-7031 | 81349 | MILR52243 | PIN, RETAINING, 4 1/8" LONG | 16 |
| 9 | PBOZZ | 5420-00-542-3139 | 97403 | 13211E7882 | STRUT, QUADRANT | 2 |
| 10 | PBOZZ | 5420-00-542-3148 | 97403 | 13211E7884 | BEAM, CYLINDER | 1 |
| 11 | PBOZZ | 5420-00-542-3146 | 97403 | 1321 1E7885 | BEAM, CABLE..... | 1 |
| 12 | PBOZZ | 5420-00-542-3147 | 97403 | 1321 1E7881 | PLATE, EQUALIZER | 1 |
| END OF FIGURE | | | | | | |

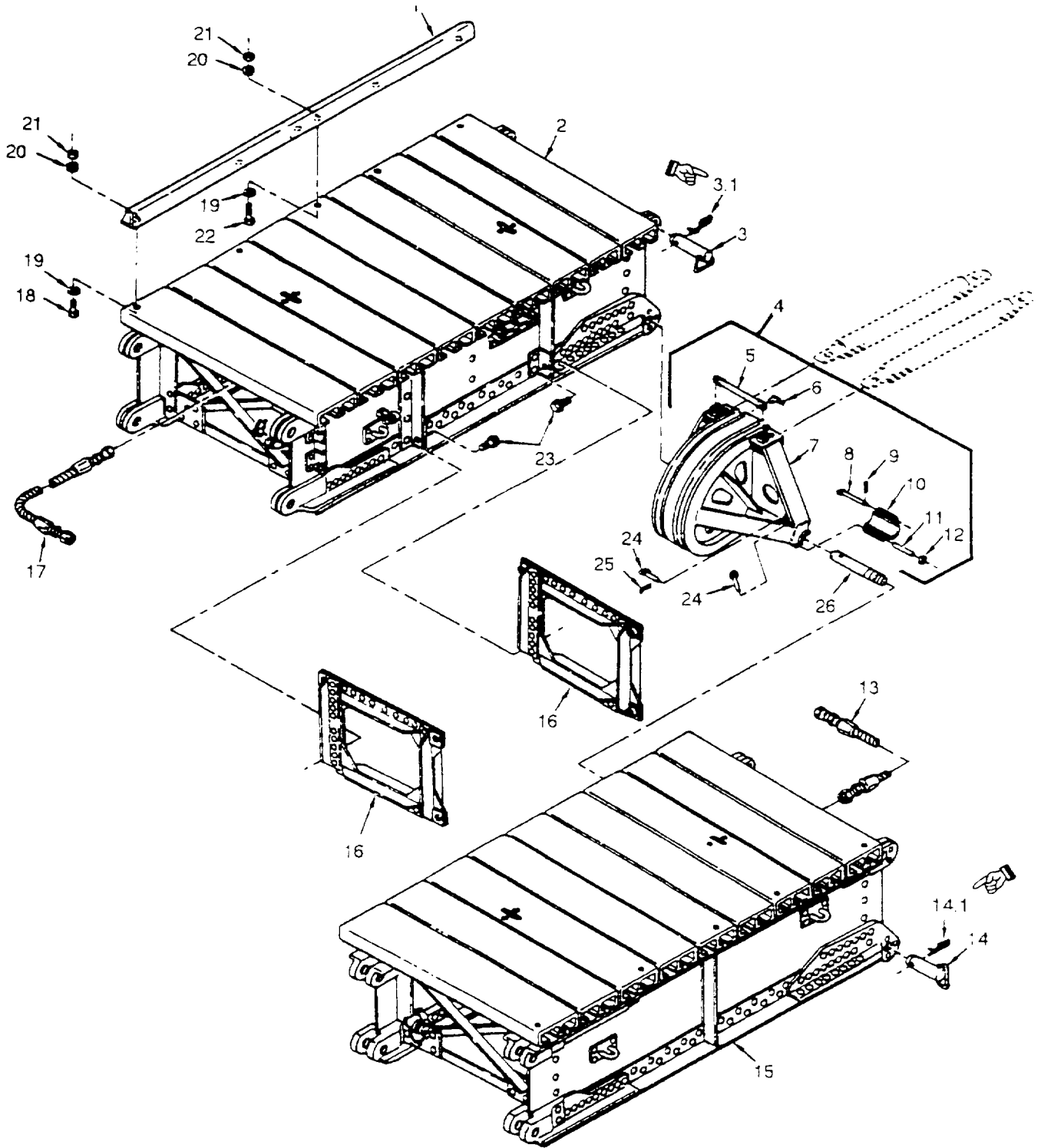


FIGURE 4. CENTER PANELS AND RELATED PARTS

| (1) ITEM NO | SECTION II (2) SMR CODE | (3) NSN | (4) CAGEC | TM 5-5420-203-24P C01 (5) PART NUMBER | (6) DESCRIPTION AND USABLE ON CODES (UDC) | (7) QTY |
|--|----------------------------------|------------------|--------------|--|--|------------|
| GROUP 02: FRAME | | | | | | |
| FIG. 4 CENTER PANELS AND RELATED PARTS | | | | | | |
| 1 | PBOZZ | 5420-00-542-3130 | 97403 | 13211E7858 | CURB, DECK..... | 4 |
| 2 | PBOOD | 5306-00-542-3115 | 97403 | 13211E7825 | PANEL, CENTER, FEMALE (FOR..... | 2 |
| COMPONENT PARTS SEE GROUP 0201) | | | | | | |
| 3 | PAOZZ | 5420-00-542-3136 | 97403 | 13211E7820 | PIN, CONNECTOR..... | 4 |
| 3.1 | PAOZZ | 5420-00-060-7032 | 81349 | MILR52243 | PIN, RETAINING, 7 13/16" LONG | 4 |
| 4 | PAOOF | 2520-00-240-8935 | 97403 | 1321 1E7860 | QUADRANT ASSY, AVLB (GROUP 0203)..... | 1 |
| 5 | PBOZZ | 5420-00-542-3135 | 97403 | 13211E7861 | RETAINER, CABLE | 1 |
| 6 | PAOZZ | 5420-00-542-3134 | 97403 | 13211E7863 | PIN, LOCKING, RETAINER..... | 2 |
| 7 | XAOZZ | 5420-00-542-3132 | 97403 | 13211E7857 | QUADRANT ASSY | 1 |
| 8 | PAOZZ | 5420-00-542-3133 | 97403 | 13211E7862 | PIN, LOCKING, QUADRAN | 2 |
| 9 | PAOZZ | 5420-00-060-7030 | 97403 | 13217E9894 | RETAINER, BRIDGE | 2 |
| 10 | XDOZZ | 5420-01-109-5663 | 97403 | 13211E7934 | HINGE, QUADRANT, AVLB..... | 2 |
| 11 | XDOZZ | | 97403 | 13211 E7860-5 | PIN | 2 |
| 12 | XDOZZ | 5310-00-809-8533 | 96906 | MS27183-23 | WASHER, FLAT | 4 |
| 13 | PAOZZ | 4720-00-731-5332 | 98441 | A1150-4 | HOSE ASSEMBLY, NONME | 2 |
| 14 | PAOZZ | 5420-00-682-4517 | 97403 | 13211E7891 | PIN, PANEL, CENTER | 2 |
| 14.1 | PAOZZ | 5420-00-060-7032 | 81349 | MIL452243 | PIN, RETAINING, 4 1/8" LONG | 2 |
| 15 | PBOOD | 5420-00-542-3116 | 97403 | 13211E7813 | PANEL, CENTER, MALE (FOR | 2 |
| COMPONENT PARTS SEE GROUP 0202) | | | | | | |
| 16 | PBOZZ | 5420-00-542-3123 | 97403 | 13211E7897 | BRACE, TRANSVERSE | 4 |
| 17 | PAOZZ | 4720-00-731-5333 | 98441 | A1150-1 | HOSE ASSEMBLY, NONME | 4 |
| 18 | PAOZZ | 5305-00-922-7994 | 96906 | MS90728-189 | SCREW, CAP, HEXAGON H | 8 |
| 19 | PAOZZ | 5310-00-167-0826 | 88044 | AN960-1216 | WASHER, FLAT | 20 |
| 20 | PAOZZ | 5310-00-584-7888 | 96906 | MS35338-51 | WASHER, LOCK | 20 |
| 21 | PAOZZ | 5310-00-763-8921 | 96906 | MS51967-23 | NUT, PLAIN, HEXAGON | 20 |
| 22 | PAOZZ | 5305-00-947-4361 | 96906 | MS90728-198 | SCREW, CAP, HEXAGON H..... | 12 |
| 23 | PAOZZ | 5306-00-542-3126 | 97403 | 1321 IE7898 | BOLT, ASSEMBLED WASH | 16 |
| 24 | PAOZZ | 5420-00-542-3133 | 97403 | 13211E7862 | PIN, LOCKING, QUADRAN | 4 |
| 25 | PAOZZ | 5420-00-061-2873 | 81349 | MILR52243 | RETAINER, BRIDGE PIN | 2 |
| 26 | PAOZZ | 5420-00-542-3131 | 97403 | 13211E7913 | PIN, HINGE, QUADRANT..... | 2 |

END OF FIGURE

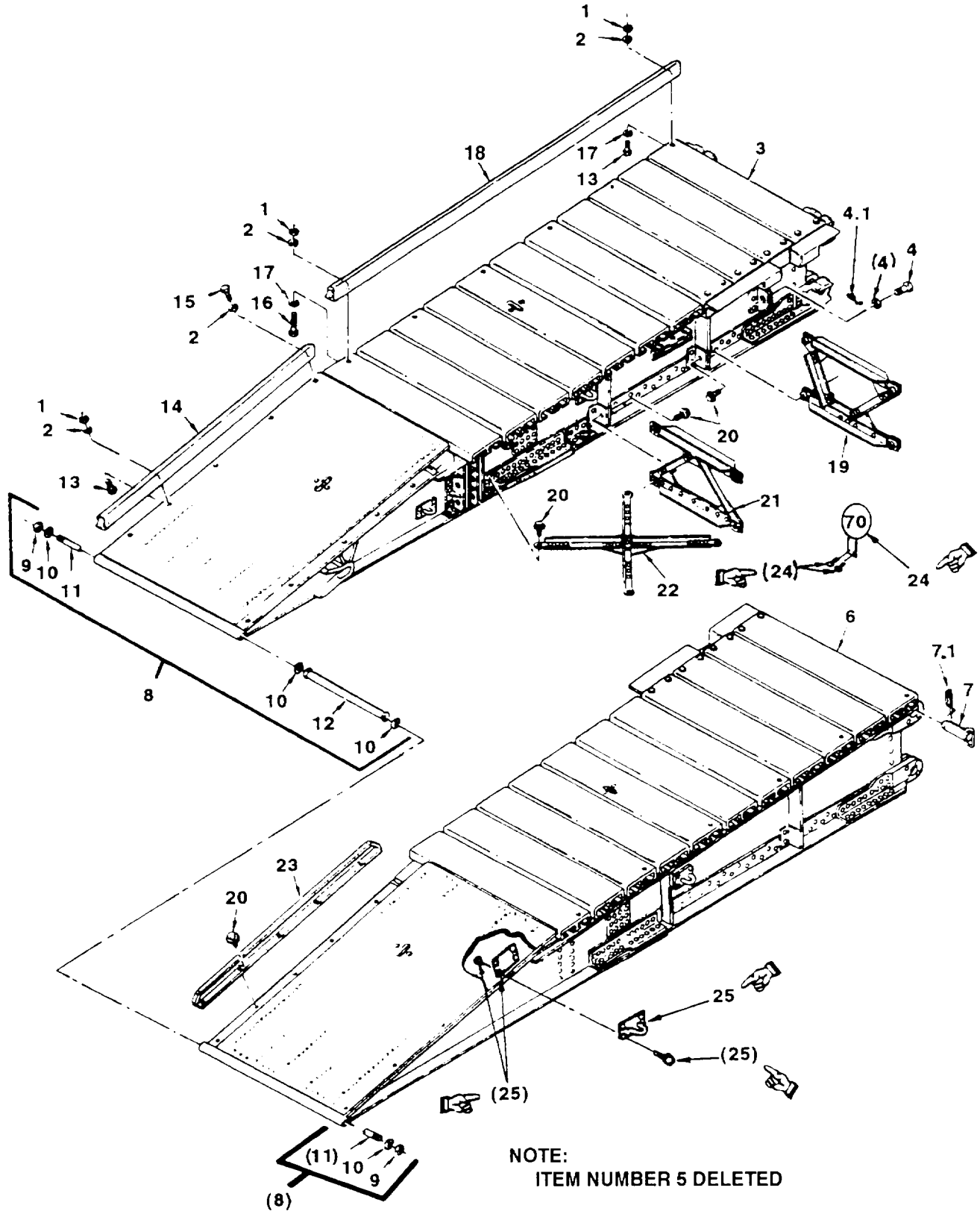
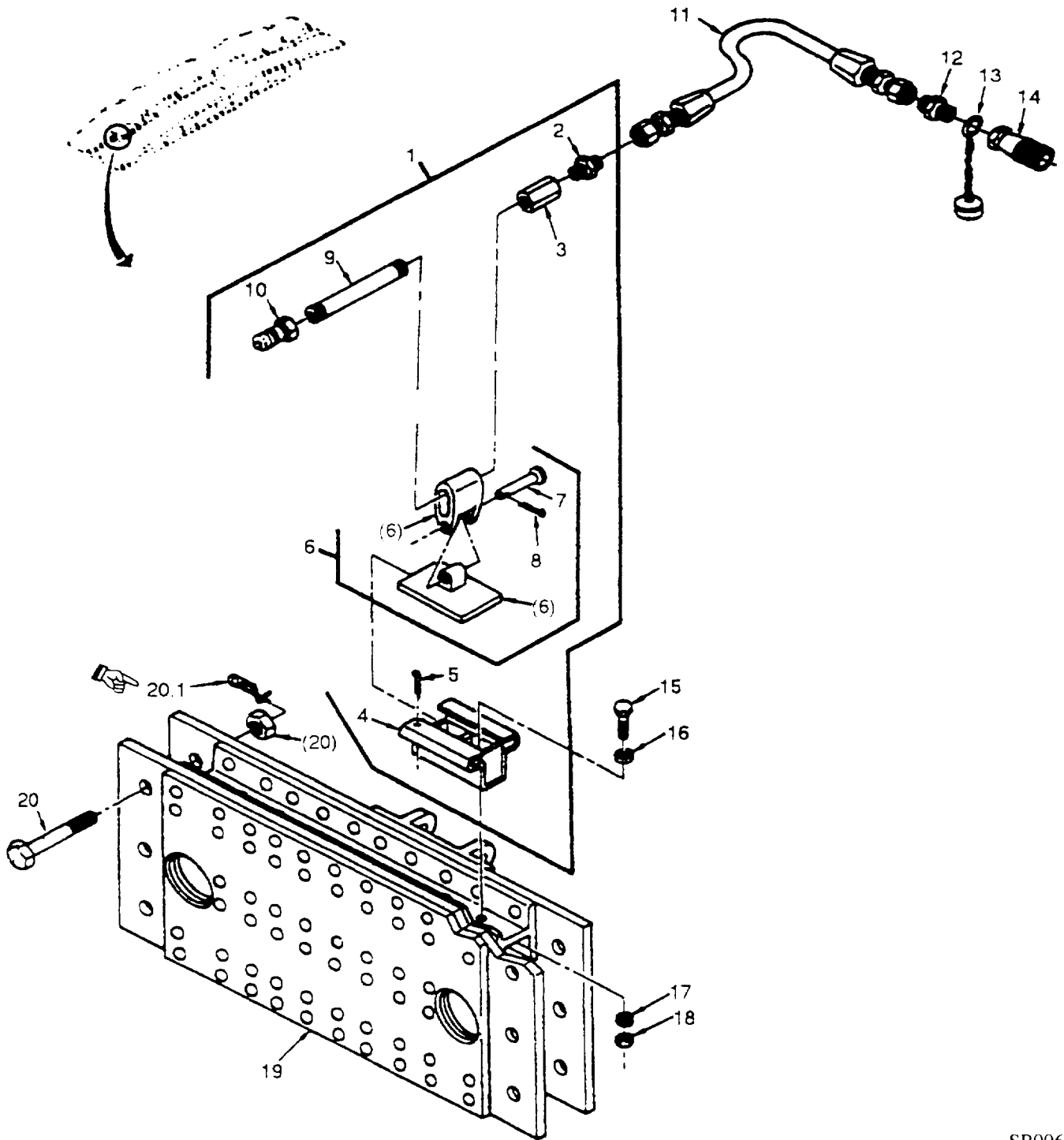


FIGURE 5. END PANELS AND RELATED PARTS

| (1) ITEM NO | SECTION II (2) SMR CODE | (3) NSN | (4) CAGEC | TM 5-5420-203-24P C02 (5) PART NUMBER | (6) DESCRIPTION AND USABLE ON CODES (UDC) | (7) QTY |
|-------------------------------------|----------------------------------|------------------|--------------|--|--|------------|
| GROUP 02 FRAME | | | | | | |
| FIG. 5 END PANELS AND RELATED PARTS | | | | | | |
| 1 | PAOZZ | 5310-00-763-8921 | 96906 | MS51967-23 | NUT, PLAIN. HEXAGON | 40 |
| 2 | PAOZZ | 5310-00-584-7888 | 96906 | MS35338-51 | WASHER, LOCK | 44 |
| 3 | PBOOD | 2510-00-542-3118 | 97403 | 13211E7843 | PANEL ASSEMBLY, END. FEMALE (FOR | 2 |
| COMPONENT PARTS SEE GROUP 0204) | | | | | | |
| 4 | PAOZZ | 5420-00-542-3145 | 97403 | 13211E7926 | BOILT, BRIDGE..... | 2 |
| 4.1 | PAOZZ | 5420-00-060-7031 | 81349 | MILR52243 | PIN, RETAINING, 4 1/8" LONG | 2 |
| 5 | DELETED | | | | | |
| 6 | PBOOD | 5420-00-542-3117 | 97403 | 13211E7837 | PANEL, RAMP, MALE (FOR COMPONENT..... | 2 |
| PARTS SEE GROUP 0205) | | | | | | |
| 7 | PAOZZ | 5420-00-542-3136 | 97403 | 13211E7820 | PIN. CONNECTOR..... | 16 |
| 7.1 | PAOZZ | 5420-00-060-7032 | 81349 | MIL452243 | PIN, RETAINING, 7 13/16" LONG | 16 |
| 8 | PAOOO | 5420-00-059-9809 | 97403 | 13211E7929 | TIE ROD ASSY, RAMP (GROUP 0206) | 2 |
| 9 | PAOZZ | 5310-01-032-2318 | 96906 | MS51943-53 | NUT, SELF-LOCKING, HE | 2 |
| 10 | PAOZZ | 5310-00-983-8485 | 96906 | MS27183-30 | WASHER. FLAT | 4 |
| 1 | PFOZZ | 5305-01-136-1186 | 97403 | 13211E7922 | ROD, THREADED END | 1 |
| 12 | PBOZZ | 5365-01-011-5038 | 97403 | 13211E7923 | SPACER, RAMP | 1 |
| 13 | PAOZZ | 5305-00-903-7298 | 96906 | MS90725-189 | SCREW. CAP, HEXAGON H..... | 20 |
| 14 | PBOZZ | 5420-00-542-3129 | 97403 | 13211E7856 | CURB, RAMP | 4 |
| 15 | PAOZZ | 5305-00-050-4212 | 96906 | MS90728-186 | SCREW, CAP, HEXAGON H..... | 4 |
| 16 | PAOZZ | 5305-00-947-4361 | 96906 | MS90728-198 | SCREW, CAP, HEXAGON H..... | 20 |
| 17 | PAOZZ | 5310-00-167-0826 | 88044 | AN960-1216 | WASHER, FLAT | 24 |
| 18 | PBOZZ | 5420-00-542-3128 | 97403 | 13211E7836 | CURB, END PANEL | 4 |
| 19 | PBOZZ | 5420-00-542-3124 | 97403 | 13211E7888 | BRACE, TRANSVERSE | 2 |
| 20 | PAOZZ | 5306-00-542-3126 | 97403 | 13211E7898 | BOLT, ASSEMBLED WASH..... | 44 |
| 21 | PBOZZ | 5420-00-542-3125 | 97403 | 13211E7887 | BRACE, TRANSVERSE | 2 |
| 22 | PBOZZ | 5420-00-542-3122 | 97403 | 13211E7886 | BRACE, LATERAL | 2 |
| 23 | PBOZZ | 5420-00-542-3127 | 97403 | 13211E7899 | CURB, INSIDE..... | 4 |
| END OF FIGURE | | | | | | |



SB006

FIGURE 6. DIAPHRAGM AND RELATED PARTS

| SECTION II | | | | TM 5-5420-203-24P C01 | | |
|-----------------------------------|----------|------------------|-------|-----------------------|---|-----|
| (1) | (2) | (3) | (4) | (5) | (6) | (7) |
| ITEM NO | SMR CODE | NSN | CAGEC | PART NUMBER | DESCRIPTION AND USABLE ON CODES (UDC) | QTY |
| GROUP 02: FRAME | | | | | | |
| FIG 6 DIAPHRAGM AND RELATED PARTS | | | | | | |
| 1 | AOOOO | 4730-01-281-7903 | 903 | 13211E7849 | QUICK DISCONNECT (GROUP 0207)..... | 4 |
| 2 | PAOZZ | 4730-00-202-8469 | 96906 | MSS51500A12 | ADAPTER. STRAIGHT PI | 1 |
| 3 | PAOZZ | 4730-01-017-0264 | 97403 | 13211E7932 | COUPLING, PIPE | 1 |
| 4 | PBOZZ | 5420-00-542-3153 | 97403 | 13211E7854 | HOLDER, BRACKET | 1 |
| 5 | PAOZZ | 5315-00-298-1481 | 96906 | MS24665-357 | PIN. COTTER | 1 |
| 6 | PBOOO | 5420-00-542-2115 | 97403 | 13211E7855 | BRACKET, QUICK DISCO (GROUP 070701) | 1 |
| 7 | PAOZZ | 5315-01-016-6654 | 97403 | 13211E7855-3 | PIN. STRAIGHT., HEADED | 1 |
| 8 | PAOZZ | 5315-00-839-5821 | 96906 | MS24665-351 | PIN. COTTER | 1 |
| 9 | PAOZZ | 4730-01-169-2452 | 97403 | 13222E0986-3 | NIPPLE. PIPE | 2 |
| 10 | PAOZZ | 4730-00-182-9086 | 97403 | 1321E3212 | COUPLING HALF, QUICK | 1 |
| 11 | PAOZZ | 4720-00-986-6932 | 97403 | 132111-7904-2 | HOSE ASSEMBLY, NONME | 4 |
| 12 | PAOZZ | 4730-00-202-8469 | 96906 | MS51500A112 | ADAPTER. STRAIGHT. 11 | 4 |
| 13 | P4OZZ | 5420-00-816-5469 | 97403 | 132111E7831 | CAP ASSEMBLY HYDRAULIC | 4 |
| 14 | PAOZZ | 4730-00-257-0236 | 97403 | 13211E3213 | COUPLING HALF. QUICK | 4 |
| 15 | PAOZZ | 5305-00-732-0511 | 96906 | M.S90728-110 | SCREW, CAP, HEXAGON | 8 |
| 16 | PAOZZ | 5310-00-809-5998 | 96906 | MS27183-18 | WASHER, FLAT | 8 |
| 17 | PAOZZ | 5310-00-584-5272 | 96906 | MS35338-48 | WASHER. LOCK | 8 |
| 18 | PAOZZ | 5310-01-070-2105 | 96906 | NMS51967-14 | NUT, PLAIN. HEXAGON | 8 |
| 19 | PBOZZ | 5420-00-542-3149 | 97403 | 13211E7850 | DIAPHRAGM. LAUNCHING | 2 |
| 20 | PBOZZ | 5420-00-542-3144 | 97403 | 13211E7846 | BOLT. DIAPHRAGM..... | 2 |
| 20.1 | PAOZZ | 5420-00-060-7031 | 81349 | MILR52243 | PIN, RETAINING, 4 1/8" LONG | 12 |

END OF FIGURE

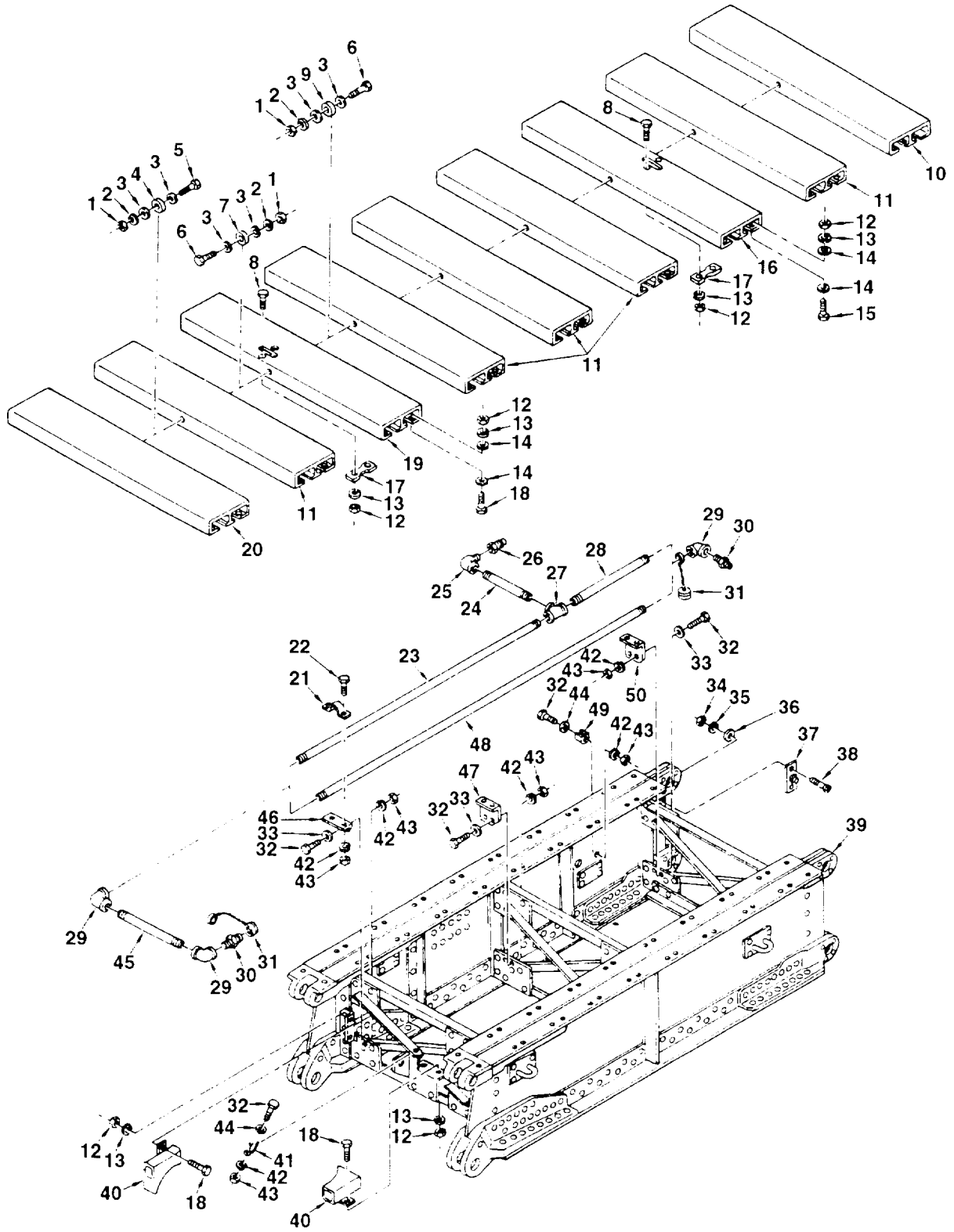


FIGURE 7 CENTER PANEL COMPONENTS
(ASSY P/N'S 13211E7825 FEMALE
AND 13211E7813 MALE)

| (1) ITEM NO | SECTION II (2) SMR CODE | (3) NSN | (4) CAGEC | TM 5-5420-203-24P C01 (5) PART NUMBER | (6) DESCRIPTION AND USABLE ON CODES (UDC) | (7) QTY |
|---|----------------------------------|------------------|--------------|--|---|------------|
| GROUP 0201 AND 0202 | | | | | | |
| FIG. 7 CENTER PANEL COMPONENTS (ASSY P/N'S 13211E7825 FEMALE AND 13211E7813 MALE) | | | | | | |
| 1 | PAOZZ | 5310-00-763-8921 | 96906 | MS51967-23 | NUT, PLAIN, HEXAGON | 8 |
| 2 | PAOZZ | 5310-00-584-7888 | 96906 | MS35338-51 | WASHER, LOCK | 8 |
| 3 | PBOZZ | 5310-00-167-0826 | 88044 | AN960-1216 | WASHER, FLAT | 16 |
| 4 | PBOZZ | 5365-01-128-5311 | 97403 | 13211E7852-3 | SPACER, SLEEVE | 2 |
| 5 | PAOZZ | 5305-00-903-7298 | 96906 | MS90725-189 | SCREW, CAP, HEXAGON H..... | 2 |
| 6 | PAOZZ | 5305-00-958-8995 | 96906 | MS90725-188 | SCREW, CAP, HEXAGON H..... | 6 |
| 7 | PBOZZ | 5310-01-128-5158 | 97403 | 13211E7852-1 | WASHER, FLAT | 2 |
| 8 | PAOZZ | 5305-00-071-2071 | 96906 | MS90728-115 | SCREW, CAP, HEXAGON H..... | 4 |
| 9 | PBOZZ | 5310-01-128-4123 | 97403 | 13211E7852-2 | WASHER, FLAT | 4 |
| 10 | PAOZZ | 5420-00-496-9609 | 97403 | 13211E7819 | DECK, EXTRUSION..... | 1 |
| 11 | PBOZZ | 5420-00-484-5726 | 97403 | 13211E7827 | DECK, EXTRUSION..... | 5 |
| 12 | PAOZZ | 5310-01-070-2105 | 96906 | MS51967-14 | NUT, PLAIN, HEXAGON | 76 |
| 13 | PAOZZ | 5310-00-584-5272 | 96906 | MS35338-48 | WASHER, LOCK | 76 |
| 14 | PAOZZ | 5310-00-167-0823 | 88044 | AN960-816 | WASHER, FLAT | 136 |
| 15 | PAOZZ | 5305-00-071-2072 | 96906 | MS90728-116 | SCREW, CAP, HEXAGON H..... | 36 |
| 16 | PBOZZ | 5420-01-065-6134 | 97403 | 13211E7829 | DECK, EXTRUSION..... | 1 |
| 17 | PFOZZ | 2510-01-168-9886 | 97403 | 13211E7821 | BAR, LIFTING..... | 2 |
| 18 | PAOZZ | 5305-00-071-2068 | 96906 | MS90728-112 | SCREW, CAP, HEXAGON H..... | 36 |
| 19 | PAOZZ | 5420-00-496-9607 | 97403 | 13211E7816-1 | DECK, EXTRUSION..... | 1 |
| 20 | PBOZZ | 5420-01-048-2241 | 97403 | 13211E7930 | DECK, EXTRUSION..... | 1 |
| 21 | PBOZZ | 4730-01-142-8284 | 97403 | 13211E7835 | CLAMP, PIPE, ANCHOR A..... | 3 |
| 22 | PAOZZ | 4730-01-142-8284 | 96906 | MS90725-6 | SCREW, CAP, HEXAGON H..... | 6 |
| 23 | PAOZZ | 4730-01-159-4852 | 97403 | 13222E0986-6 | NIPPLE, PIPE (USED ON FEMALE | 1 |
| 24 | PAOZZ | 4730-01-159-4848 | 97403 | 13222E0986-5 | CENTER PANEL ASSY ONLY) NIPPLE, PIPE (USED ON FEMALE | 1 |
| 25 | PAOZZ | 4730-00-203-0030 | 81343 | 12-12-140239C | CENTER PANEL ASSY ONLY) ELBOW, PIPE (USED ON FEMALE | 2 |
| 26 | PAOZZ | 4730-00-182-9086 | 97403 | 1321 1E3212 | CENTER PANEL ASSY ONLY) COUPLING HALF, QUICK (USED ON..... | 1 |
| 27 | PAOZZ | 4730-01-009-0981 | 81343 | 12-12-140438S | FEMALE CENTER PANEL ASSY ONLY) TEE, PIPE (USED ON FEMALE | 1 |
| 28 | PAOZZ | 4730-01-159-4853 | 97403 | 13222E0986-4 | CENTER PANEL ASSY ONLY) NIPPLE, PIPE (USED ON FEMALE | 1 |
| 29 | PAOZZ | 4730-00-288-9773 | 81343 | 12-12-140238C | CENTER PANEL ASSY ONLY) ELBOW, PIPE | 3 |
| 30 | PAOZZ | 4730-00-278-3917 | 97403 | 12-4-140140C | TUBE, FITTING | 2 |
| 31 | PBOZZ | 5340-01-010-0283 | 97403 | 13211E7936 | CAP, PROTECTIVE, DUST (QTY | V |
| 32 | PAOZZ | 5305-00-225-3843 | 96906 | MS90728-8 | 1 MALE, QTY 2 FEMALE) SCREW, CAP, HEXAGON H..... | V |
| 33 | PAOZZ | 5310-00-823-8804 | 96906 | MS27183-9 | (QTY 7 MALE, QTY 9 FEMALE) WASHER, FLAT | 6 |
| 34 | PAOZZ | 5310-00-732-0559 | 96906 | MS51968-8 | NUT, PLAIN, HEXAGON (USED | 2 |
| 35 | PAOZZ | 5310-00-637-9541 | 96906 | MS35338-46 | ON MALE CENTER PANEL ASSY ONLY) WASHER, LOCK (USED ON MALE | 2 |
| 36 | PAOZZ | 5310-00-167-0821 | 88044 | AN960-616 | CENTER PANEL ASSY ONLY) WASHER, FLAT (USED ON MALE | 2 |
| 37 | PFOZZ | 4730-01-120-8494 | 97403 | 13211E7937 | CENTER PANEL ASSY ONLY) FLANGE, PIPE (USED ON MALE | 1 |
| 38 | PAOZZ | 5305-00-781-7245 | 96906 | MS35191-323 | CENTER PANEL ASSY ONLY) SCREW, MACHINE (USED ON..... | 2 |
| 39 | PBOOD | 97403 | 13211E7814 | | CENTER PANEL ASSY ONLY) PANEL STRUCTURE, MALE | 1 |

| SECTION II | | | | TM 5-5420-203-24P C01 | | |
|------------|----------|------------------|-------|-----------------------|--|-----|
| (1) | (2) | (3) | (4) | (5) | (6) | (7) |
| ITEM NO | SMR CODE | NSN | CAGEC | PART NUMBER | DESCRIPTION AND USABLE ON CODES (UDC) | QTY |
| 39 | PBOOD | | 97403 | 1321 IE7826 | PANEL STRUCTURE. FEMALE | 1 |
| 40 | PBOZZ | 2590-01-134-6541 | 97403 | 13211E7833 | GUIDE, HOSE ,MALE..... | 2 |
| 40 | PBOZZ | 5420-01-121-1220 | 97403 | 13211E7823 | GUIDE, HOSE, FLEXIBLE , FEMALE..... | 2 |
| 41 | PAOZZ | 2590-01-109-5664 | 97403 | 13211E3139-2 | RETAINER, SPRING, DUS (QTY 1 | V |
| 42 | PAOZZ | 5310-00-582-5965 | 96906 | MS35338-44 | WASHER, LOCK (QTY 13 MALE, | V |
| 43 | PAOZZ | 5310-00-761-6882 | 96906 | MS51967-2 | QTY 15 FEMALE) NUT, PLAIN, HEXAGON (QTY 13 | V |
| 44 | PAOZZ | 5310-00-141-1795 | 88044 | AN960-416 | MALE, QTY 15 FEMALE) WASHER, FLAT (QTY 1 MALE, | V |
| 45 | PAOZZ | 4730-01-159-4847 | 97403 | 13222E0986-7 | QTY 3 FEMALE) NIPPLE, PIPE | 1 |
| 46 | PBOZZ | 5340-01-129-9885 | 97403 | 13211E7848 | BRACKET, ANGLE | 1 |
| 47 | PBOZZ | 5340-01-129-9884 | 97403 | 13211E7815 | BRACKET, ANGLE | 1 |
| 48 | PAOZZ | 4730-01-126-3763 | 97403 | 13222E0986-1 | NIPPLE, PIPE (USED ON MALE | 1 |
| 49 | PAOZZ | 5340-00-462-4143 | 97403 | 13211E3139-1 | CENTER PANEL ASSY ONLY) CLIP, SPRING TENSION (USED ON | 1 |
| 50 | PBOZZ | 5340-01-129-9883 | 97403 | 13211E7839 | FEMALE CENTER PANEL ASSY ONLY) BRACKET, ANGLE..... | 1 |

END OF FIGURE

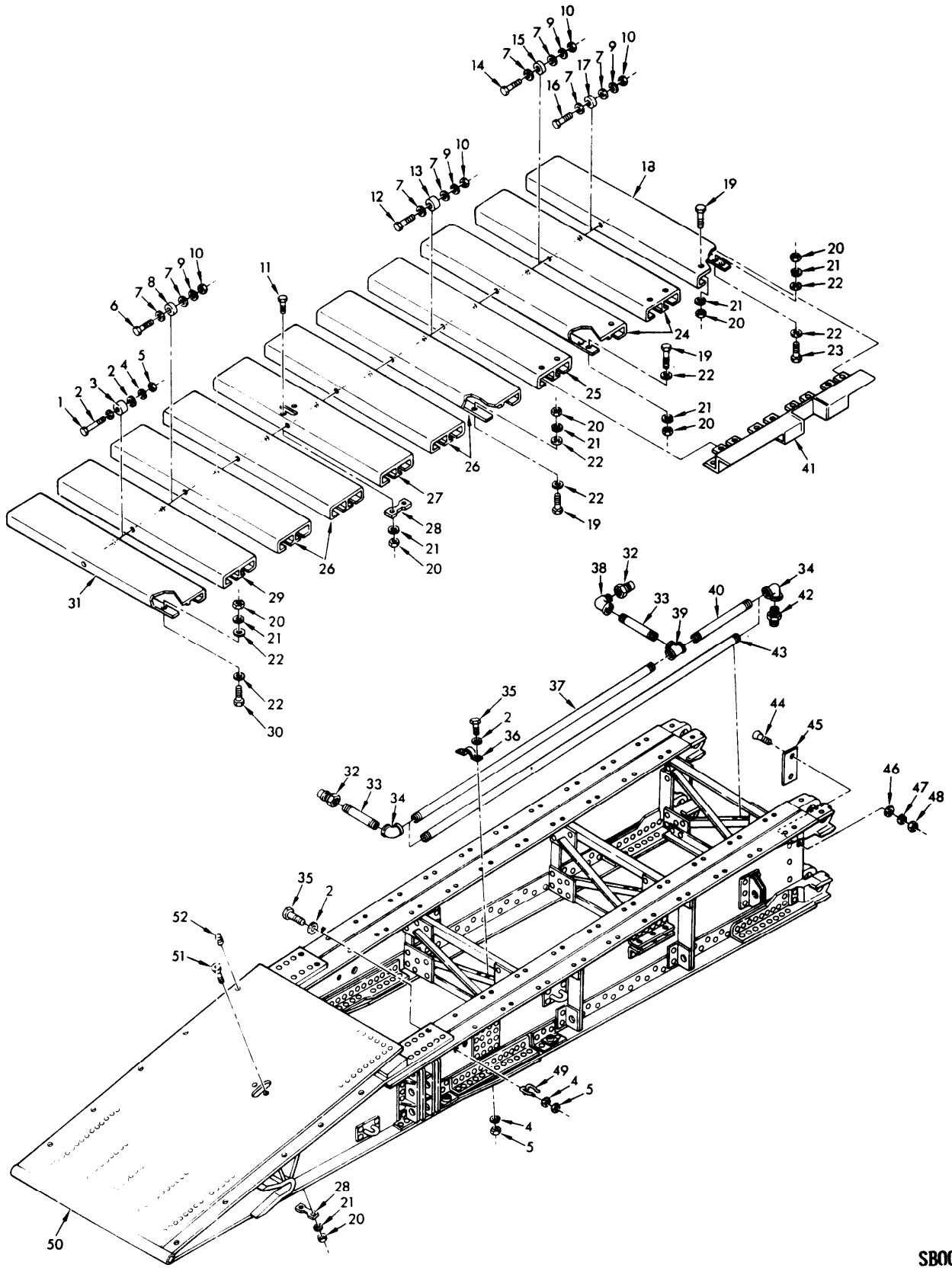
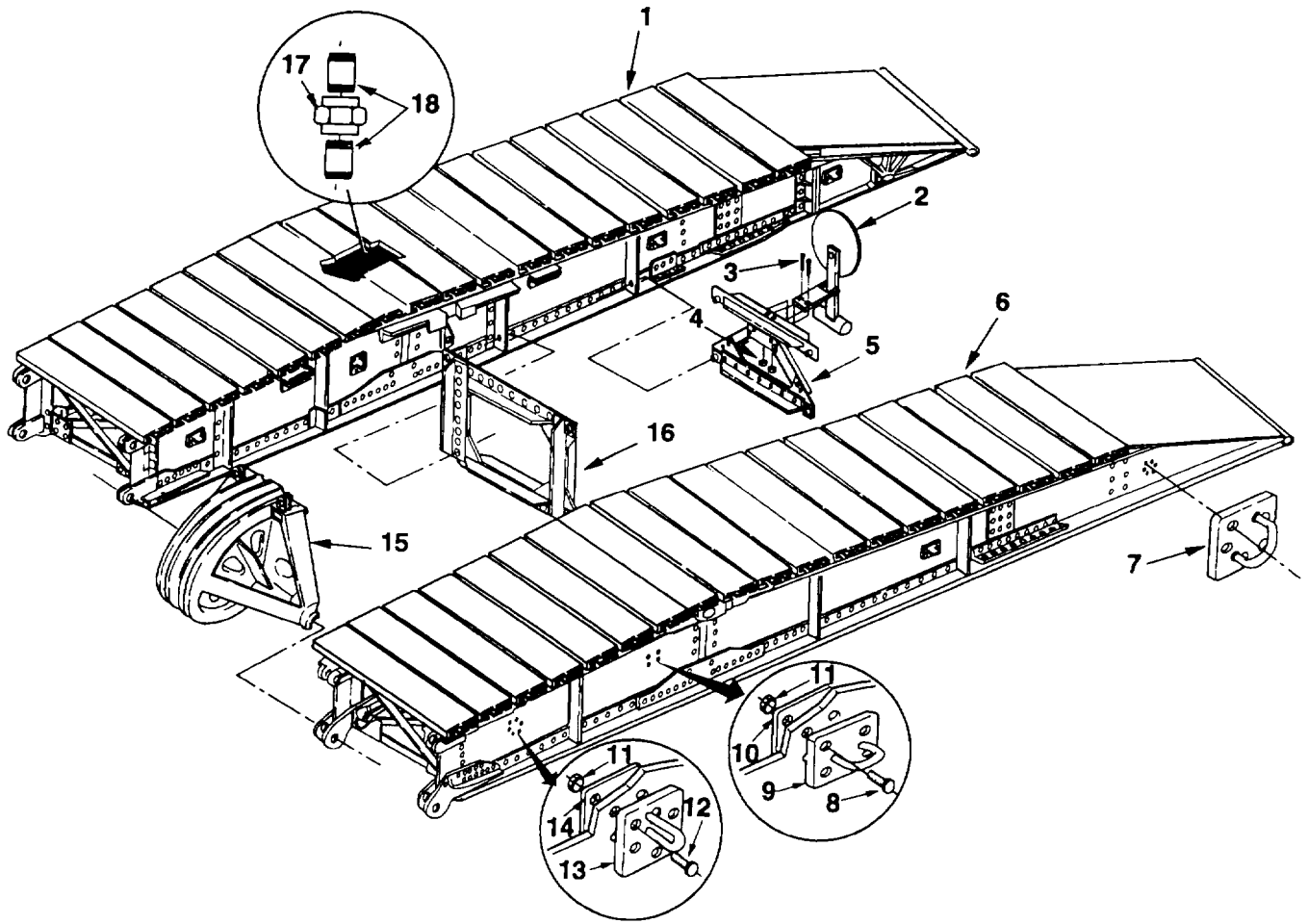


FIGURE 8. END PANEL COMPONENTS (ASSY P/N'S 13211E7843 FEMALE AND 13211E7837 MALE)

| (1) ITEM NO | SECTION II (2) SMR CODE | (3) NSN | (4) CAGEC | TM9-2350-24P-2, C01 (5) PART NUMBER | (6) DESCRIPTION AND USABLE ON CODES (UOC) | (7) QTY |
|-------------------|----------------------------------|------------------|--------------|--|--|------------|
| 1 | | | | | GROUP 0204 AND 0205 | |
| | | | | | FIG. 8 END PANEL COMPONENTS (ASSY P/N'S 13211E7843 FEMALE AND 13211E7837 MALE) | |
| 1 | PAOZZ | 5305-00-071-2518 | 96906 | MS90728-21 | SCREW, CAP, HEXAGON H..... | 1 |
| 2 | PAOZZ | 5310-00-141-1795 | 88044 | AN960-416 | WASHER, FLAT (QTY 10 MALE QTY 9 FEMALE) | V |
| 3 | PBOZZ | 5365-01-130-0951 | 97403 | 13211E7824 | SPACER, SLEEVE | 1 |
| 4 | PAOZZ | 5310-00-582-5965 | 96906 | MS35338-44 | WASHER, LOCK (QTY 9 MALE QTY 8 FEMALE) | V |
| 5 | PAOZZ | 5310-00-761-6882 | 96906 | MS51967-2 | NUT, PLAIN, HEXAGON (QTY 9 MALE QTY 8 FEMALE) | V |
| 6 | PAOZZ | 5305-00-947-4354 | 96906 | MS90728-191 | SCREW, CAP, HEXAGON H..... | 1 |
| 7 | PAOZZ | 5310-00-167-0826 | 88044 | AN960-1216 | WASHER, FLAT | 18 |
| 8 | PBOZZ | 5365-01-130-0950 | 97403 | 13211E7852-5 | SPACER, SLEEVE | 1 |
| 9 | PAOZZ | 5310-00-584-7888 | 96906 | MS35338-51 | WASHER, LOCK | 9 |
| 10 | PAOZZ | 5310-00-763-8921 | 96906 | MS51967-23 | NUT, PLAIN, HEXAGON | 9 |
| 11 | PAOZZ | 5305-00-071-2071 | 96906 | MS90728-115 | SCREW, CAP, HEXAGON H..... | 2 |
| 12 | PAOZZ | 5305-00-042-9479 | 96906 | MS90725-192 | SCREW, CAP, HEXAGON H..... | 6 |
| 13 | PBOZZ | 5365-01-128-5311 | 97403 | 13211E7852-4 | SPACER, SLEEVE | 6 |
| 14 | PAOZZ | 5305-00-958-8995 | 96906 | MS90725-188 | SCREW, CAP, HEXAGON H..... | 1 |
| 15 | PBOZZ | 5310-01-128-5158 | 97403 | 13211E7952-1 | WASHER, FLAT | 1 |
| 16 | PAOZZ | 5305-00-922-7994 | 96906 | MS90728-189 | SCREW, CAP, HEXAGON H..... | 1 |
| 17 | PBOZZ | 5365-01-128-5311 | 97403 | 13211E7852-3 | SPACER, SLEEVE | 1 |
| 18 | PBOZZ | 5420-01-048-2240 | 97403 | 13211E7940 | DECK, EXTRUSION ,FEMALE | 1 |
| 18 | PBOZZ | 5420-01-109-5665 | 97403 | 13211E7859 | DECK, BRIDGE, AVLB ,MALE | 1 |
| 19 | PAOZZ | 5305-01-071-2068 | 96906 | MS90728-112 | SCREW, CAP, HEXAGON H..... | 76 |
| 20 | PAOZZ | 5310-01-070-2105 | 96906 | MS51967-14 | NUT, PLAIN, HEXAGON | 106 |
| 21 | PAOZZ | 5310-00-584-5272 | 96906 | MS35338-48 | WASHER, LOCK | 106 |
| 22 | PAOZZ | 5310-00-167-0823 | 88044 | AN960-816 | WASHER, FLAT | 180 |
| 23 | PAOZZ | 5305-00-071-2072 | 96906 | MS90728-116 | SCREW, CAP, HEXAGON H..... | 20 |
| 24 | PBOZZ | 5420-01-062-5595 | 97403 | 13211E7828-2 | DECK, EXTRUSION..... | 2 |
| 25 | PBOZZ | 5420-01-071-9058 | 97403 | 13211E7828-1 | DECK, EXTRUSION..... | 1 |
| 26 | PBOZZ | 5420-00-484-5726 | 97403 | 13211E7827 | DECK, EXTRUSION..... | 4 |
| 27 | PBOZZ | 5420-01-063-5650 | 97403 | 13211E7829 | DECK, EXTRUSION ,FEMALE | 1 |
| 27 | PBOZZ | 5420-01-065-6134 | 97403 | 13211E7816-2 | DECK, EXTRUSION ,MALE | 1 |
| 28 | PFOZZ | 2510-01-168-9886 | 97403 | 13211E7821 | BAR, LIFTING..... | 2 |
| 29 | PAOZZ | 2510-00-496-9608 | 97403 | 13211E7817-2 | DECK, EXTRUSION ,FEMALE | 1 |
| 29 | PAOZZ | 5420-00-495-6012 | 97403 | 13211E7817-1 | DECK, EXTRUSION ,MALE | 1 |
| 30 | PAOZZ | 5305-00-071-2073 | 96906 | MS90728-117 | SCREW, CAP, HEXAGON H..... | 6 |
| 31 | PBOZZ | 5420-00-131-4692 | 97403 | 13211E7818 | DECK, EXTRUSION..... | 1 |
| 32 | PAOZZ | 4730-00-182-9086 | 97403 | 13211E3212 | COUPLING HALF, QUICK (QTY 2 MALE QTY 1 FEMALE) | V |
| 33 | PAOZZ | 4730-01-159-4847 | 97403 | 13222E0986-7 | NIPPLE, PIPE (QTY 2 MALE QTY 1 FEMALE) | V |
| 34 | PAOZZ | 4730-00-288-9773 | 81343 | 12-12-140238C | ELBOW, PIPE | 2 |
| 35 | PAOZZ | 5305-00-225-3843 | 96906 | MS90728-8 | SCREW, CAP, HEXAGON H..... (QTY 8 MALE, QTY 7 FEMALE) | V |
| 36 | PBOZZ | 4730-01-142-8284 | 97403 | 13211E7835 | CLAMP, PIPE, ANCHOR A..... | 3 |
| 37 | PAOZZ | 4730-01-159-4850 | 97403 | 13222E0986-9 | NIPPLE, PIPE (USED ON MALE END PANEL ASSY ONLY) | 1 |
| 38 | PAOZZ | 4730-00-203-0030 | 81343 | 12-12-140239C | ELBOW, PIPE (USED ON MALE END PANEL ASSY ONLY) | 1 |
| 39 | PAOZZ | 4730-01-009-0981 | 81343 | 12-12-140438S | TEE, PIPE (USED ON MALE END PANEL ASSY ONLY) | 1 |

| SECTION II | | | | TM 5-5420-203-24P C01 | | |
|------------|----------|------------------|-------|-----------------------|--|-----|
| (1) | (2) | (3) | (4) | (5) | (6) | (7) |
| ITEM NO | SMR CODE | NSN | CAGEC | PART NUMBER | DESCRIPTION AND USABLE ON CODES (UDC) | QTY |
| 40 | PAOZZ | 4730-01-159-4849 | 97403 | 13222E0986-11 | NIPPLE, PIPE (USED ON MALE END PANEL ASSY ONLY) | 1 |
| 41 | PBOZZ | 5420-01-044-8351 | 97043 | 13211E7841 | RETAINER, DECK END, FEMALE | 1 |
| 41 | PBOZZ | 5945-00-131-4684 | 97403 | 13211E7847 | RETAINER, ELECTRICAL, MALE | 1 |
| 42 | PAOZZ | 4730-00-796-0496 | 96906 | MS51500A12S | FITTING. HYDRAULIC T | 1 |
| 43 | PAOZZ | 4730-01-159-4851 | 97403 | 13222E0986-12 | NIPPLE, PIPE (USED ON FEMALE END PANEL ASSY ONLY) | 1 |
| 44 | PAOZZ | 5305-00-781-7245 | 96906 | MS35191-323 | SCREW. MACHINE | 2 |
| 45 | PFOZZ | 4730-01-120-8494 | 97403 | 13211E7937 | FLANGE. PIPE | 1 |
| 46 | PAOZZ | 5310-00-167-0821 | 88044 | AN960-616 | WASHER, FLAT | 2 |
| 47 | PAOZZ | 5310-00-637-9541 | 96906 | MS35338-46 | WASHER, LOCK | 2 |
| 48 | PAOZZ | 5310-00-732-0559 | 96906 | MS51968-8 | NUT. PLAIN, HEXAGON | 2 |
| 49 | PAOZZ | 5430-00-462-4143 | 97403 | 13211E3139-1 | CLIP, SPRING TENSION (QTY 2 MALE QTY 1 FEMALE) | V |
| 50 | PBOOD | | 97403 | 13211E7844 | PANEL ,FEMALE | 1 |
| 50 | PBOOD | | 97403 | 1321 1E7838 | PANEL .MALE | 1 |
| 51 | PAOZZ | 5305-00-903-3640 | 96906 | MS24667-78 | SCREW, CAP, SOCKET HE | 2 |
| 52 | PAOZZ | 5340-00-290-4503 | 96906 | MS 122088 | INSERT, SCREW THREAD | 1 |

END OF FIGURE



NOTE: ITEM 19 AND 20 NOT SHOWN.

FIGURE 9. MLC 70 QUARTER PANELS AND RELATED COMPONENTS (MALE AND FEMALE)

| (1) ITEM NO | SECTION II (2) SMR CODE | (3) NSN | (4) CAGEC | TM 5-5420-203-24P C01 (5) PART NUMBER | (6) DESCRIPTION AND USABLE ON CODES (UDC) | (7) QTY |
|--------------------|----------------------------------|------------------|--------------|--|--|------------|
| GROUP 03: FRAME | | | | | | |
| FIG. 9 MLC 70 AVLB | | | | | | |
| 1 | PAODD | 5420-01-420-1684 | 97403 | 13230E4809 | MLC 70 MALE (5420-01-420-1684) FOR COMPONENT PARTS SEE ALL 01 AND 02 GROUPS | 2 |
| 2 | PAOZZ | 5340-01-416-3913 | 97403 | 13230E4896 | FLAG, SIGNAL | 2 |
| 3 | PAOZZ | 5305-00-225-3845 | 96906 | B1821BH0250100N | SCREW, CAP, HEXAGON, H..... | 4 |
| 4 | PAOZZ | 5310-00-929-1807 | 96906 | MS51922-2 | NUT, SELF-LOCKING | 4 |
| 5 | PAODD | 5420-01-420-1685 | 97403 | 13230E4899 | BRACE, TRANSVERSE | 2 |
| 6 | PAODD | 5420-01-419-9478 | 97403 | 13230E4808 | MLC 70 FEMALE . (5420-01-419-9475)..... FOR COMPONENT PARTS SEE ALL 01 AND 02 GROUPS | 2 |
| 7 | PAOZZ | 5340-01-424-5907 | 97403 | 13230E6453 | BRACKET, LIFTING, RIGHT | 6 |
| 8 | PAOZZ | 5305-00-916-2345 | 96906 | B1821BH075F200N | SCREW, CAP, HEXAGON | 80 |
| 9 | PAOZZ | 5420-01-419-9485 | 97403 | 13230E4893 | BRACKET, TIEDOWN | 20 |
| 10 | PAOZZ | 5420-01-419-9483 | 97403 | 13230E4894 | PLATE, TIEDOWN | 20 |
| 11 | PAOZZ | 5310-00-982-6810 | 96906 | MS21044N12 | NUT, SELF-LOCKING, HE | 152 |
| 12 | PAOZZ | 5305-00-948-0803 | 96906 | B1821BH075F300N | SCREW, CAP, HEXAGON | 72 |
| 13 | PAOZZ | 5340-01-424-5908 | 97403 | 13230E6454 | BRACKET, LIFTING, LEFT | 6 |
| 14 | PAOZZ | 5340-01-424-5909 | 97403 | 13230E6455 | PLATE, LIFTING, AVLB..... | 12 |
| 15 | PAOOF | 2590-01-431-4438 | 97403 | 12463645 | QUADRANT ASSY | 1 |
| 16 | PAODD | 5420-01-419-9481 | 97403 | 13230E6447 | BRACE, TRANSVERSE | 4 |
| 17 | PAOZZ | 4730-01-023-7729 | 59646 | MSS SP-03 | PIPE UNION, 3/4 NPS, CL3000 | 4 |
| 18 | PAOZZ | 4730-01-159-4849 | 97403 | 13222E0986-11 | NIPPLE, PIPE | V |
| 19 | PAOZZ | 5305-00-068-0510 | 96906 | B1821BH038C100N | SCREW, CAP, HEXAGON (NOT SHOWN) | 16 |
| 20 | PAOZZ | 5365-01-393-1243 | 97403 | 13230E4810 | PLATE, RETAINING (NOT SHOWN) | |
| END OF FIGURE | | | | | | |

SECTION II

TM5-5420-203-24P C02

| (1) ITEM NO. | (2) SMR CODE | (3) NSN | (4) CAGEC | (5) PART NUMBER | (6) DESCRIPTION AND USABLE ON CODES(UOC) | (7) QTY |
|--|--------------------|------------------|--------------|-----------------------|---|------------|
| GROUP 94: REPAIR PARTS KITS AND SETS | | | | | | |
| GROUP 9401: REPAIR PARTS KITS | | | | | | |
| FIG.9A (LISTED NUMERICALLY BY PART NUMBER) | | | | | | |
| * | PAFZZ | 2590-01-312-0441 | 97403 | 13228E1971 | KIT SCISSORING CYL..... V | |
| | | | | | RING,WIPER | (1) 2-2 |
| | | | | | RING,WIPER | (1) 2-4 |
| | | | | | SPACER,RING | (1) 2-6 |
| | | | | | O-RING | (1) 2-7 |
| | | | | | PACKING ASSEMBLY | (1) 2-8 |
| | | | | | O-RING | (2) 2-14 |
| | | | | | RETAINER,PACKING | (2) 2-15 |
| | | | | | O-RING | (1) 2-17 |
| | | | | | RING,PISTON | (2) 2-20 |
| | | | | | O-RING | (2) 2-20A |

END OF FIGURE

SECTION IV

TM 5-5420-203--24P C01
 CROSS- REFERENCE-INDEXES
 NATIONAL STOCK NUMBER INDEX

| STOCK NUMBER | FIG. | ITEM | STOCK NUMBER | FIG. | ITEM |
|------------------|------|------|------------------|------|------|
| 5305-00-042-9479 | 8 | 12 | 4730-00-278-3917 | 1 | 9 |
| 5305-00-050-4212 | 5 | 15 | 4730-00-288-9773 | 8 | 34 |
| 5420-00-059-9809 | 5 | 8 | 5340-00-290-4503 | 8 | 52 |
| 5420-00-060-7030 | 4 | 9 | 5315-00-298-1481 | 6 | 5 |
| 5420-00-060-7031 | 3 | 8.1 | 5420-00-449-7172 | 2 | 16 |
| | 6 | 20.1 | 5330-00-450-6605 | 2 | 8 |
| 5420-00-060-7032 | 3 | 4.1 | 5340-00-462-4143 | 7 | 49 |
| | 4 | 14.1 | | 8 | 49 |
| | 4 | 3.1 | 5420-00-484-5726 | 7 | 11 |
| | 5 | 4.1 | | 8 | 26 |
| | 5 | 7.1 | 5420-00-495-6012 | 8 | 29 |
| 5420-00-061-2873 | 4 | 25 | 5420-00-496-9607 | 7 | 19 |
| 5305-00-068-0502 | 7 | 22 | 2510-00-496-9608 | 8 | 29 |
| 5305-00-068-0510 | 9 | 19 | 5420-00-496-9609 | 7 | 10 |
| 5305-00-071-2068 | 7 | 18 | 1650-00-516-8336 | 2 | 2 |
| | 8 | 19 | 5420-00-542-3115 | 4 | 2 |
| 5305-00-071-2071 | 7 | 8 | 5420-00-542-3116 | 4 | 15 |
| | 8 | 11 | 5420-00-542-3117 | 5 | 6 |
| 5305-00-071-2072 | 7 | 15 | 2510-00-542-3118 | 5 | 3 |
| | 8 | 23 | 5420-00-542-3122 | 5 | 22 |
| 5305-00-071-2073 | 8 | 30 | 5420-00-542-3123 | 4 | 16 |
| 5305-00-071-2518 | 8 | 1 | 5420-00-542-3124 | 5 | 19 |
| 5945-00-131-4684 | 8 | 41 | 5420-00-542-3125 | 5 | 21 |
| 5420-00-131-4692 | 8 | 31 | 5306-00-542-3126 | 3 | 2 |
| 5310-00-141-1795 | 7 | 44 | | 4 | 23 |
| | 8 | 2 | | 5 | 20 |
| 5310-00-167-0821 | 7 | 36 | 5420-00-542-3127 | 5 | 23 |
| | 8 | 46 | 5420-00-542-3128 | 5 | 18 |
| 5310-00-167-0823 | 7 | 14 | 5420-00-542-3129 | 5 | 14 |
| | 8 | 22 | 5420-00-542-3130 | 4 | 1 |
| 5310-00-167-0826 | 4 | 19 | 5420-00-542-3131 | 4 | 26 |
| | 5 | 17 | 5420-00-542-3132 | 4 | 7 |
| | 7 | 3 | 5420-00-542-3133 | 4 | 8 |
| | 8 | 7 | | 4 | 24 |
| 5420-00-182-8639 | 1 | 13 | 5420-00-542-3134 | 4 | 6 |
| 4730-00-182-9086 | 1 | 5 | 5420-00-542-3135 | 4 | 5 |
| | 6 | 10 | 5420-00-542-3136 | 4 | 3 |
| | 7 | 26 | | 5 | 7 |
| | 8 | 32 | 5420-00-542-3137 | 3 | 3 |
| 5420-00-186-3405 | 2 | 19 | 5420-00-542-3138 | 3 | 7 |
| 4730-00-202-8469 | 1 | 2 | 5420-00-542-3139 | 3 | 9 |
| | 6 | 2 | 5420-00-542-3140 | 3 | 6 |
| | 6 | 12 | 5420-00-542-3141 | 3 | 5 |
| 4730-00-203-0030 | 1 | 8 | 5420-00-542-3143 | 3 | 4 |
| | 7 | 25 | 5420-00-542-3144 | 6 | 20 |
| | 8 | 38 | 5420-00-542-3145 | 3 | 8 |
| 5305-00-225-3843 | 7 | 32 | | 5 | 4 |
| | 8 | 35 | 5420-00-542-3146 | 3 | 11 |
| | 9 | 3 | 5420-00-542-3147 | 3 | 12 |
| 5305-00-226-7767 | 1 | 14 | 5420-00-542-3148 | 3 | 10 |
| 5420-00-235-4684 | 2 | 9 | 5420-00-542-3149 | 6 | 19 |
| 2590-00-240-8935 | 4 | 4 | 5420-00-542-3151 | 3 | 1 |
| 4820-00-249-4203 | 1 | 10 | 5420-00-542-3152 | 6 | 6 |
| 4730-00-257-0236 | 1 | 4 | 5420-00-542-3153 | 6 | 4 |
| 4730-00-257-0236 | 6 | 14 | 5420-00-542-3154 | 5 | 5 |
| 4730-00-277-9457 | 1 | 6 | 5420-00-542-3156 | 1 | 20 |

SECTION IV

 TM 5-5420-203--24P C01
 CROSS- REFERENCE-INDEXES
 NATIONAL STOCK NUMBER INDEX

| STOCK NUMBER | FIG. | ITEM | STOCK NUMBER | FIG. | ITEM |
|------------------|------|------|------------------|------|------|
| 5420-00-542-3157 | 1 | 11 | 5305-00-947-4353 | 1 | 22 |
| 5420-00-542-3192 | 1 | 21 | 5305-00-947-4354 | 8 | 6 |
| 5330-00-579-9675 | 2 | 7 | 5305-00-947-4361 | 4 | 22 |
| 5310-00-582-5965 | 7 | 42 | | 5 | 16 |
| | 8 | 4 | 5305-00-948-0803 | 9 | 12 |
| 5310-00-584-5272 | 1 | 15 | 5305-00-958-8995 | 7 | 6 |
| | 6 | 17 | | 8 | 14 |
| | 7 | 13 | 5310-00-982-6810 | 9 | 11 |
| | 8 | 21 | 5310-00-983-8485 | 5 | 10 |
| 5310-00-584-7888 | 1 | 18 | 4720-00-986 6932 | 6 | 11 |
| | 4 | 20 | 5305-00-993-1849 | 2 | 13 |
| | 5 | 2 | 4730 01-009-0981 | 1 | 7 |
| | 7 | 2 | | 7 | 27 |
| | 8 | 9 | | 8 | 39 |
| 5315-00-597-7399 | 1 | 12 | 5340 01-010-0283 | 7 | 31 |
| 2805-00-606-4396 | 2 | 20 | 5365-01-011-5038 | 5 | 12 |
| 2590-00-606-4474 | 2 | 4 | 5315-01-016-6654 | 6 | 7 |
| 5330-00-618-4602 | 2 | 14 | 4730-01-017-0264 | 6 | 3 |
| 5310-00-637-9541 | 8 | 47 | 4730-01-023-7729 | 9 | 17 |
| | 7 | 35 | 5310-01-032-2318 | 5 | 9 |
| 5420-00-682-4517 | 4 | 14 | 5305-11-038-8424 | 2 | 11 |
| 5365-00-689-3127 | 2 | 3 | 5420-01-044-8351 | 8 | 41 |
| 5305-00-724-7875 | 2 | 22 | 5420-01-045-3562 | 2 | 5 |
| 5330-00-729-6632 | 2 | 17 | 5420-01-048-2240 | 8 | 18 |
| 4720-00-731-5332 | 4 | 13 | 5420-01-048-2241 | 7 | 20 |
| 4720-00-731-5333 | 4 | 17 | 5420-01-062-5595 | 8 | 24 |
| 5305-00-732-0511 | 6 | 15 | 5420-01-063-5650 | 8 | 27 |
| 5310-00-732-0559 | 7 | 34 | 5420-01-065-6134 | 7 | 16 |
| | 8 | 48 | | 8 | 27 |
| 4720-00-732-3418 | 1 | 1 | 5310-01-070-2105 | 6 | 18 |
| 5310-00-761-6882 | 7 | 43 | | 7 | 12 |
| | 8 | 5 | | 8 | 20 |
| 5310-00-763-8921 | 1 | 19 | 5420-01-071-9058 | 8 | 25 |
| | 4 | 21 | 5420-01-104-9108 | 1 | 16 |
| | 5 | 1 | 5340-01-109-5663 | 4 | 10 |
| | 7 | 1 | 2590-01-109-5664 | 7 | 41 |
| | 8 | 10 | 5420-01-109-5665 | 8 | 18 |
| 5305-00-781-7245 | 7 | 38 | 5420-01-120-3020 | 2 | 21 |
| | 8 | 44 | 4730-01-120-8494 | 7 | 37 |
| 4730-00-796-0496 | 8 | 42 | | 8 | 45 |
| 5310-00-809-8533 | 4 | 12 | 5420-01-121-1220 | 7 | 40 |
| 5310-00-809-5998 | 6 | 16 | 5420-01-121-1549 | 2 | 1 |
| 5420-00-816-5649 | 1 | 3 | 5420-01-121-1608 | 2 | 23 |
| | 6 | 13 | 5330-01-121-2778 | 2 | 15 |
| 5310-00-823-8804 | 7 | 33 | 4730-01-126-3763 | 7 | 48 |
| 5315-00-839-5821 | 6 | 8 | 5310-01-128-4123 | 7 | 9 |
| 5340-00-872-7696 | 2 | 10 | 5310-01-128-5158 | 7 | 7 |
| 5330-00-883-0233 | 2 | 6 | | 8 | 15 |
| 5305-00-903-3640 | 8 | 51 | 5330-01-128-5202 | 2 | 18 |
| 5305-00-903-7298 | 5 | 13 | 5365-01-128-5311 | 7 | 4 |
| 5305-00-903-7298 | 7 | 5 | | 8 | 17 |
| 5305-00-904-4004 | 2 | 12 | 5340-01-129-9883 | 7 | 50 |
| 5305-00-916-2345 | 9 | 8 | 5340-01-129-9884 | 7 | 47 |
| 5305-00-922-7994 | 4 | 18 | 5340-01-129-9885 | 7 | 46 |
| | 8 | 16 | 5365 01-130-0949 | 8 | 13 |
| 5310-00-929-1807 | 9 | 4 | 5365-01-130-0950 | 8 | 8 |

SECTION IV

TM 5-5420-203--24P C01
 CROSS- REFERENCE-INDEXES
 NATIONAL STOCK NUMBER INDEX

| STOCK NUMBER | FIG. | ITEM | STOCK NUMBER | FIG. | ITEM |
|------------------|------|------|--------------|------|------|
| 5365-01-130-0951 | 8 | 3 | | | |
| 2590-01-134-6541 | 7 | 40 | | | |
| 5306-01-136-1186 | 5 | 11 | | | |
| 4730-01-142-8284 | 7 | 21 | | | |
| | 8 | 36 | | | |
| 5340-01-145-1968 | 1 | 17 | | | |
| 4730-01-159-4847 | 7 | 45 | | | |
| | 8 | 33 | | | |
| 4730-01-159-4848 | 7 | 24 | | | |
| 4730-01-159-4849 | 8 | 40 | | | |
| | 9 | 18 | | | |
| 4730-01-159-4850 | 8 | 37 | | | |
| 4730-01-159-4851 | 8 | 43 | | | |
| 4730-01-159-4852 | 7 | 23 | | | |
| 4730-01-159-4853 | 7 | 28 | | | |
| 2510-01-168-9886 | 7 | 17 | | | |
| | 8 | 28 | | | |
| 4730-01-169-2452 | 6 | 9 | | | |
| 4730-01-281-7903 | 6 | 2 | | | |
| 5365-01-393-1243 | 9 | 20 | | | |
| 5340-01-416-3913 | 9 | 2 | | | |
| 5420-01-419-9478 | 9 | 6 | | | |
| 5420-01-419-9481 | 9 | 16 | | | |
| 5420-01-419-9483 | 9 | 10 | | | |
| 5420-01-419-9485 | 9 | 9 | | | |
| 5420-01-420-1684 | 9 | 1 | | | |
| 5420-01-420-1685 | 9 | 5 | | | |
| 5340-01-424-5907 | 9 | 7 | | | |
| 5340-01-424-5908 | 9 | 13 | | | |
| 5340-01-424-5909 | 9 | 14 | | | |
| 2590-01-431-4438 | 9 | 15 | | | |

SECTION IV

 TM 5-5420-203-24P C01
 CROSS-REFERENCE INDEXES
 PART NUMBER INDEX

| FSCM | PART NUMBER | STOCK NUMBER | FIG. | ITEM |
|-------|-----------------|------------------|------|------|
| 59646 | MSS SP-03 | 4730-01-023-7729 | 9 | 17 |
| 88044 | AN960-1216 | 5310-00-167-0826 | 4 | 19 |
| | | | 5 | 17 |
| | | | 7 | 3 |
| | | | 8 | 7 |
| 88044 | AN960-416 | 5310-00-141-1795 | 7 | 44 |
| | | | 8 | 2 |
| 88044 | AN960-616 | 5310-00-167-0821 | 7 | 36 |
| | | | 8 | 46 |
| 88044 | AN960-816 | 5310-00-167-0823 | 7 | 14 |
| | | | 8 | 22 |
| 98441 | A 1150-1 | 4720-00-731-5333 | 4 | 17 |
| 98441 | A 1150-4 | 4720-00-731-5332 | 4 | 13 |
| 96906 | B1821BH025CI00N | 5305-00-225-3843 | 9 | 3 |
| 96906 | B1821BH038C100N | 5305-00-068-0510 | 9 | 19 |
| 80204 | B1821BH075F200N | 5305-00-916-2345 | 9 | 8 |
| 96906 | B1821BH075F300N | 5305-00-948-0803 | 9 | 12 |
| 81349 | MILR52243 | 5420-00-060-7032 | 3 | 4.1 |
| | | 5420-00-060-7031 | 3 | 8.1 |
| | | 5420-00-060-7032 | 4 | 3.1 |
| | | 5420-00-060-7032 | 4 | 14.1 |
| | | 5420-00-060-7031 | 5 | 4.1 |
| | | 5420-00-060-7032 | 5 | 7.1 |
| | | 5420-00-060-7031 | 6 | 20.1 |
| 96906 | MS122088 | 5340-00-290-4503 | 8 | 52 |
| 96906 | MS21044N12 | 5310-00-982-6810 | 9 | 11 |
| 96906 | MS24665-351 | 5315-00-839-5821 | 6 | 8 |
| 96906 | MS24665-357 | 5315-00-298-1481 | 6 | 5 |
| 96906 | MS24665-631 | 5315-00-597-7399 | 1 | 12 |
| 96906 | MS24667-78 | 5305-00-903-3640 | 8 | 51 |
| 96906 | MS27183-18 | 5310-00-809-5998 | 6 | 16 |
| 96906 | MS27183-23 | 5310-00-809-8533 | 4 | 12 |
| 96906 | MS27183-30 | 5310-00-983-8485 | 5 | 10 |
| 96906 | MS27183-9 | 5310-00-823-8804 | 7 | 33 |
| 96906 | MS27595-244 | 5330-01-128-5202 | 2 | 18 |
| 96906 | MS27595-441 | 5330-00-883-0233 | 2 | 6 |
| 96906 | MS27595-451 | 5330-01-121-2778 | 2 | 15 |
| 96906 | MS28775-244 | 5330-00-729-6632 | 2 | 17 |
| 96906 | MS28775-441 | 5330-00-579-9675 | 2 | 7 |
| 96906 | MS28775-451 | 5330-00-618-4602 | 2 | 14 |
| 96906 | MS28776M2-41 | 1650-00-516-8336 | 2 | 2 |
| 96906 | MS35191-323 | 5305-00-781-7245 | 7 | 38 |
| | | | 8 | 44 |
| 96906 | MS35207-259 | 5305-00-993-1849 | 2 | 13 |
| 96906 | MS35338-44 | 5310-00-582-5965 | 7 | 42 |
| | | | 8 | 4 |
| 96906 | MS35338-46 | 5310-00-637-9541 | 7 | 35 |
| | | | 8 | 47 |
| 96906 | MS35338-48 | 5310-00-584-5272 | 1 | 15 |
| | | | 6 | 17 |
| | | | 7 | 13 |
| | | | 8 | 21 |

SECTION IV

TM 5-5420-203-24P C01
CROSS-REFERENCE

| FSCM | PART NUMBER | PART NUMBER INDEX STOCK NUMBER | FIG. | ITEM |
|-------|-------------|-----------------------------------|------|------|
| 96906 | MS35338-51 | 5310-00-584-7888 | 1 | 18 |
| | | | 4 | 20 |
| | | | 5 | 2 |
| | | | 7 | 2 |
| | | | 8 | 9 |
| 96906 | MS51500A12 | 4730-00-202-8469 | 1 | 2 |
| | | | 6 | 2 |
| | | | 6 | 12 |
| 96906 | MS51500A12S | 4730-00-796-0496 | 8 | 42 |
| 96906 | MS51922-2 | 5310-00-929-1807 | 9 | 4 |
| 96906 | MS51943-53 | 5310-01-032-2318 | 5 | 9 |
| 96906 | MS51966-8 | 5305-00-724-7875 | 2 | 22 |
| 96906 | MS51967-14 | 5310-01-070-2105 | 6 | 18 |
| 96906 | MS51967-2 | 5310-00-761-6882 | 7 | 12 |
| | | | 8 | 20 |
| | | | 7 | 43 |
| 96906 | MS51967-23 | 5310-00-763-8921 | 8 | 5 |
| | | | 1 | 19 |
| 96906 | MS51968-8 | 5310-00-732-0559 | 4 | 21 |
| | | | 5 | 1 |
| | | | 7 | 1 |
| | | | 8 | 0 |
| | | | 7 | 34 |
| | | | 8 | 48 |
| | | | 5 | 15 |
| | | | 7 | 6 |
| 96906 | MS90725-186 | 5305-00-050-4212 | 8 | 14 |
| | | | 5 | 13 |
| 96906 | MS90725-188 | 5305-00-958-8995 | 7 | 6 |
| | | | 8 | 14 |
| 96906 | MS90725-189 | 5305-00-903-7298 | 5 | 13 |
| | | | 7 | 5 |
| 96906 | MS90725-192 | 5305-00-042-9479 | 8 | 12 |
| 96906 | MS90725-6 | 5305-00-068-0502 | 7 | 22 |
| 96906 | MS90726-109 | 5305-00-226-7767 | 1 | 14 |
| 96906 | MS90727-209 | 5305-00-904-4004 | 2 | 12 |
| 96906 | MS90728-110 | 5305-00-732-0511 | 6 | 15 |
| 96906 | MS90728-112 | 5305-00-071-2068 | 7 | 18 |
| 96906 | MS90728-115 | 5305-00-071-2071 | 8 | 19 |
| | | | 7 | 8 |
| 96906 | MS90728-116 | 5305-00-071-2072 | 8 | 11 |
| | | | 7 | 15 |
| 96906 | MS90728-117 | 5305-00-071-2073 | 8 | 23 |
| 96906 | MS90728-189 | 5305-00-922-7994 | 4 | 30 |
| 96906 | MS90728-190 | 5305-00-947-4353 | 8 | 18 |
| | | | 8 | 16 |
| 96906 | MS90728-191 | 5305-00-947-4354 | 1 | 22 |
| 96906 | MS90728-198 | 5305-00-947-4361 | 8 | 6 |
| 96906 | MS90728-21 | 5305-00-071-2518 | 4 | 22 |
| | | | 5 | 16 |
| 96906 | MS90728-8 | 5305-00-225-3843 | 8 | 1 |
| 81348 | WWN351TYPEB | 4730-00-277-9457 | 7 | 32 |
| | | | 8 | 35 |
| | | | 1 | 6 |

SECTION IV

TM 5-5420-203-24P C01
CROSS-REFERENCE INDEXES

| FSCM | PART NUMBER | PART NUMBER INDEX STOCK NUMBER | FIG. | ITEM |
|-------|---------------|-----------------------------------|------|------|
| 81343 | 12-4-140140C | 4730-00-278-3917 | 1 | 9 |
| 81343 | 12-12-140238C | 4730-00-288-9773 | 7 | 29 |
| | | | 8 | 34 |
| 81343 | 12-12-140438S | 4730-01-009-0981 | 1 | 7 |
| | | | 7 | 27 |
| | | | 8 | 39 |
| 81343 | 12-12-140239C | 4730-00-203-0030 | 1 | 8 |
| | | | 7 | 25 |
| | | | 8 | 38 |
| 19207 | 12463568 | TBD | 10 | 1 |
| 97403 | 12463645 | 2590-01-431-4438 | 9 | 15 |
| 97403 | 13207E9894 | 5420-00-060-7030 | 4 | 9 |
| 97403 | 13211E3121-4 | 2805-00-606-4396 | 2 | 20 |
| 97403 | 13211E3139-1 | 5340-00-462-4143 | 7 | 49 |
| | | | 8 | 49 |
| 97403 | 13211E3139-2 | 2590-01-109-5664 | 7 | 41 |
| 97403 | 13211E3142-4 | 5330-00-450-6605 | 2 | 8 |
| 97403 | 13211E3144-4 | 2590-00-606-4474 | 2 | 4 |
| 97403 | 13211E3147 | 5340-00-872-7696 | 2 | 10 |
| 97403 | 13211E3212 | 4730-00-182-9086 | 1 | 5 |
| | | | 6 | 10 |
| | | | 7 | 26 |
| | | | 8 | 32 |
| 97403 | 13211E3213 | 4730-00-257-0236 | 1 | 4 |
| | | | 6 | 14 |
| 97403 | 13211E7813 | 5420-00-542-3116 | 4 | 15 |
| 97403 | 13211E7814 | | 7 | 39 |
| 97403 | 13211E7815 | 5340-01-129-9884 | 7 | 47 |
| 97403 | 13211E7816-1 | 5420-00-496-9607 | 7 | 19 |
| 97403 | 13211E7816-2 | 5420-01-063-5650 | 8 | 27 |
| 97403 | 13211E7817-1 | 5420-00-495-6012 | 8 | 29 |
| 97403 | 13211E7817-2 | 2510-00-496-9608 | 8 | 29 |
| 97403 | 13211E7818 | 5420-00-131-4692 | 8 | 31 |
| 97403 | 13211E7819 | 5420-00-496-9609 | 7 | 10 |
| 97403 | 13211E7820 | 5420-00-542-3136 | 4 | 3 |
| | | | 5 | 7 |
| 97403 | 13211E7821 | 2510-01-168-9886 | 7 | 17 |
| | | | 8 | 28 |
| 97403 | 13211E7823 | 5420-01-121-1220 | 7 | 40 |
| 97403 | 13211E7824 | 5365-01-130-0951 | 8 | 3 |
| 97403 | 13211E7825 | 5420-00-542-3115 | 4 | 2 |
| 97403 | 13211E7825-41 | | 7 | 30 |
| 97403 | 13211E7826 | | 7 | 39 |
| 97403 | 13211E7827 | 5420-00-484-5726 | 7 | 11 |
| | | | 8 | 26 |
| 97403 | 13211E7828-1 | 5420-01-071-9058 | 8 | 25 |
| 97403 | 13211E7828-2 | 5420-01-062-5595 | 8 | 24 |
| 97403 | 13211E7829 | 5420-01-065-6134 | 7 | 16 |
| | | | 8 | 27 |
| 97403 | 13211E7831 | 5420-00-816-5649 | 1 | 3 |
| | | | 6 | 13 |
| 97403 | 13211E7833 | 2590-01-134-6541 | 7 | 40 |

| FSCM | PART NUMBER | PART NUMBER INDEX STOCK NUMBER | FIG. | ITEM |
|-------|---------------|-----------------------------------|------|------|
| 97403 | 13211E7835 | 4730-01-142-8284 | 7 | 21 |
| | | | 8 | 36 |
| 97403 | 13211E7836 | 5420-00-542-3128 | 5 | 18 |
| 97403 | 13211E7837 | 5420-00-542-3117 | 5 | 6 |
| | | | 8 | 50 |
| 97403 | 13211E7839 | 5340-01-129-9883 | 7 | 50 |
| 97403 | 13211E7841 | 5420-01-044-8351 | 8 | 41 |
| 97403 | 13211E7842 | 4820-00-249-4203 | 1 | 10 |
| 97403 | 13211E7843 | 2510-00-542-3118 | 5 | 3 |
| 97403 | 13211E7844 | | 8 | 50 |
| 97403 | 13211E7846 | 5420-00-542-3144 | 6 | 20 |
| 97403 | 13211E7847 | 5945-00-131-4684 | 8 | 41 |
| 97403 | 13211E7848 | 5340-01-129-9885 | 7 | 46 |
| 97403 | 13211E7849 | 4730-01-281-7903 | 6 | 1 |
| 97403 | 13211E7850 | 5420-00-542-3149 | 6 | 19 |
| 97403 | 13211E7851 | 5420-00-542-3151 | 3 | 1 |
| 97403 | 13211E7852-1 | 5310-01-128-5158 | 7 | 7 |
| | | | 8 | 15 |
| 97403 | 13211E7852-2 | 5310-01-128-4123 | 7 | 9 |
| 97403 | 13211E7852-3 | 5365-01-128-5311 | 7 | 4 |
| | | | 8 | 17 |
| 97403 | 13211E7852-4 | 5365-01-130-0949 | 8 | 13 |
| 97403 | 13211E7852-5 | 5365-01-130-0950 | 8 | 8 |
| 97403 | 13211E7854 | 5420-00-542-3153 | 6 | 4 |
| 97403 | 13211E7855 | 5420-00-542-3152 | 6 | 6 |
| 97403 | 13211E7855-3 | 5315-01-016-6654 | 6 | 7 |
| 97403 | 13211E7856 | 5420-00-542-3129 | 5 | 14 |
| 97403 | 13211E7857 | 5420-00-542-3132 | 4 | 7 |
| 97403 | 13211E7858 | 5420-00-542-3130 | 4 | 1 |
| 97403 | 13211E7859 | 5420-01-109-5665 | 8 | 18 |
| 97403 | 13211E7860 | 2590-00-240-8935 | 4 | 4 |
| 97403 | 13211 E7860-5 | | 4 | 11 |
| 97403 | 13211E7861 | 5420-00-542-3135 | 4 | 5 |
| 97403 | 13211E7862 | 5420-00-542-3133 | 4 | 8 |
| | | | 4 | 24 |
| 97403 | 13211E7863 | 5420-00-542-3134 | 4 | 6 |
| 97403 | 13211E7867 | 5420-00-186-3405 | 2 | 19 |
| 97403 | 13211E7868 | 5365-00-689-3127 | 2 | 3 |
| 97403 | 13211E7871 | 5420-01-121-1549 | 2 | 1 |
| 97403 | 13211E7873 | 5420-00-542-3157 | 1 | 11 |
| 97403 | 13211E7874 | 5420-00-542-3156 | 1 | 20 |
| 97403 | 13211E7875 | 5420-01-121-1608 | 2 | 23 |
| 97403 | 13211E7876 | 5420-00-235-4684 | 2 | 9 |
| 97403 | 13211E7879 | 5420-00-542-3154 | 5 | 5 |
| 97403 | 13211E7880 | 5420-01-104-9108 | 1 | 16 |
| 97403 | 13211E7880-8 | 5305-01-038-8424 | 2 | 11 |
| 97403 | 13211E7881 | 5420-00-542-3147 | 3 | 12 |
| 97403 | 13211.7882 | 5420-00-542-3139 | 3 | 9 |
| 97403 | 13211E7883 | 5420-00-542-3138 | 3 | 7 |
| 97403 | 13211E7884 | 5420-00-542-3148 | 3 | 10 |
| 97403 | 13211E7885 | 5420-00-542-3146 | 3 | 11 |

SECTION IV

TM 5-5420-203-24P C01
CROSS-REFERENCE INDEXES

| FSCM | PART NUMBER | PART NUMBER INDEX STOCK NUMBER | FIG. | ITEM |
|-------|----------------|-----------------------------------|------|------|
| 97403 | 1321117886 | 5420-00-542-3122 | 5 | 22 |
| 97403 | 132111 7887 | 5420-00-542-3125 | 5 | 21 |
| 97403 | 13211E7888 | 5420-00-542-3124 | 5 | 19 |
| 97403 | 132111-7890 | 5420-00-542-3137 | 3 | 3 |
| 97403 | 1321 117891 | 5420-00-682-4517 | 4 | 14 |
| 97403 | 132111E7892 | 5420-00-182-8639 | 1 | 13 |
| 97403 | 132111t7893 | 5420-00-542-3141 | 3 | 5 |
| 97403 | 13211E7897 | 5420-00-542-3123 | 4 | 16 |
| 97403 | 13211E7898 | 5306-00-542-3126 | 3 | 2 |
| | | | 4 | 23 |
| | | | 5 | 20 |
| 97403 | 13211E7899 | 5420-00-542-3127 | 5 | 23 |
| 97403 | 13211E7903 | 5420-00-542-3140 | 3 | 6 |
| 97403 | 13211E7904-2 | 4720-00-986-6932 | 6 | 11 |
| 97403 | 13211E7904-3 | 4720-00-732-3418 | 1 | 1 |
| 97403 | 13211E7905-14 | | 1 | 9 |
| 97403 | 13211E7913 | 5420-00-542-3131 | 4 | 26 |
| 97403 | 13211E7922 | 5306-01-136-1186 | 5 | 11 |
| 97403 | 13211E7923 | 5365-01-011-5038 | 5 | 12 |
| 97403 | 13211E7926 | 5420-00-542-3145 | 3 | 8 |
| | | | 5 | 4 |
| 97403 | 13211E7929 | 5420-00-059-9809 | 5 | 8 |
| 97403 | 13211E7930 | 5420-01-048-2241 | 7 | 20 |
| 97403 | 13211E7931 | 5420-00-542-3143 | 3 | 4 |
| 97403 | 1321117932 | 4730-01-017-0264 | 6 | 3 |
| 97403 | 13211E7934 | 5340-01-109-5663 | 4 | 10 |
| 97403 | 13211E7935 | 5420-00-542-3192 | 1 | 21 |
| 97403 | 13211E7936 | 5340-01-010-0283 | 7 | 30 |
| | | | 7 | 31 |
| 97403 | 13211E7937 | 4730-01-120-8494 | 7 | 37 |
| | | | 8 | 45 |
| 97403 | 13211E7939 | 5340-01-145-1968 | 1 | 17 |
| 97403 | 13211E7940 | 5420-01-048-2240 | 8 | 18 |
| 97403 | 13214E0023-4 | 5420-00-449-7172 | 2 | 16 |
| 97403 | 13214E00'5-' | 5420-01-120-30'0 | 2 | 21 |
| 97403 | 13214E0033-1 | 5420-01-045-3562 | 2 | 5 |
| 97403 | 13222E0986-1 | 4730-01-126-3763 | 7 | 48 |
| 97403 | 13"222E0986-11 | 4730-01-159-4849 | 8 | 40 |
| 97403 | 13222I0986-12 | 4730-01-159-4851 | 8 | 43 |
| 97403 | 13222E0986-3 | 4730-01-169-2452 | 6 | 9 |
| 97403 | 13222E0986-4 | 4730-01-159-4853 | 7 | 28 |
| 97403 | 13222E0986-5 | 4730-01-159-4848 | 7 | 24 |
| 97403 | 13222E0986-6 | 4730-01-159-4852 | 7 | 23 |
| 97403 | 13222E0986-7 | 4730-01-159-4847 | 7 | 45 |
| | | | 8 | 33 |
| 97403 | 13222E0986-9 | 4730-01-159-4850 | 8 | 37 |
| 97403 | 13222E0986-11 | 4730-01-159-4849 | 9 | 18 |
| 97403 | 13230E4808 | 5420-01-419-9478 | 9 | 6 |
| 97403 | 13230E4809 | 5420-01-420-1684 | 9 | 1 |
| 97403 | 13230E4810 | 5365-01-393-1243 | 9 | 20 |
| 97403 | 13230E4893 | 5420-01-419-9485 | 9 | 9 |

CROSS-REFERENCE INDEXES

PART NUMBER INDEX

| FSCM | PART NUMBER | STOCK NUMBER | FIG. | ITEM |
|-------|-------------|------------------|------|------|
| 97403 | 13230E4894 | 5420-01-419-9483 | 9 | 10 |
| 97403 | 13230E4896 | 5340-01-416-3913 | 9 | 2 |
| 97403 | 13230E4899 | 5420-01-420-1685 | 9 | 5 |
| 97403 | 13230E6447 | 5420-01-419-9481 | 9 | 16 |
| 97403 | 13230E6453 | 5340-01-424-5907 | 9 | 7 |
| 97403 | 13230E6454 | 5340-01-424-5908 | 9 | 13 |
| 97403 | 13230E6455 | 5340-01-424-5909 | 9 | 14 |

CROSS-REFERENCE INDEXES
FIGURE AND ITEM NUMBER INDEX
STOCK NUMBER

| FIG. | ITEM | STOCK NUMBER | FSCM | PART NUMBER |
|------|------|------------------|-------|----------------|
| 1 | 1 | 4720-00-732-3418 | 97403 | 13211E7904-3 |
| 1 | 2 | 4730-00-202-8469 | 96906 | MS51500A12 |
| 1 | 3 | 5420-00-816-5649 | 97403 | 13211E7831 |
| 1 | 4 | 4730-00-257-0236 | 97403 | 13211E3213 |
| 1 | 5 | 4730-00-182-9086 | 97403 | 13211 E3212 |
| 1 | 6 | 4730-00-277-9457 | 81348 | WW351TYPEB |
| 1 | 7 | 4730-01-009-0981 | 81343 | 12-12-140438S |
| 1 | 8 | 4730-00-203-0030 | 81343 | 12-12-140239C |
| 1 | 9 | 4730-00-278-3917 | 81343 | 12-4-140140C |
| 1 | 10 | 4820-00-249-4203 | 97403 | 13211E7842 |
| 1 | 11 | 5420-00-542-3157 | 97403 | 13211E7873 |
| 1 | 12 | 5315-00-597-7399 | 96906 | MS24665-631 |
| 1 | 13 | 5420-00-182-8639 | 97403 | 13211E7892 |
| 1 | 14 | 5305-00-226-7767 | 96906 | MS90726-109 |
| 1 | 15 | 5310-00-584-5272 | 96906 | MS35338-48 |
| 1 | 16 | 5420-01-104-9108 | 97403 | 13211E7880 |
| 1 | 17 | 5340-01-145-1968 | 97403 | 13211E7939 |
| 1 | 18 | 5310-00-584-7888 | 96906 | MS35338-51 |
| 1 | 19 | 5310-00-763-8921 | 96906 | MS51967-23 |
| 1 | 20 | 5420-00-542-3156 | 97403 | 13211E7874 |
| 1 | 21 | 5420-00-542-3192 | 97403 | 13211E7935 |
| 1 | 22 | 5305-00-947-4353 | 96906 | MS90728-190 |
| 2 | 1 | 5420-01-121-1549 | 97403 | 13211E7871 |
| 2 | 2 | 1650-00-516-8336 | 96906 | MS28776M2-41 |
| 2 | 3 | 5365-00-689-3127 | 97403 | 13211E7868 |
| 2 | 4 | 2590-00-606-4474 | 97403 | 13211E3144-4 |
| 2 | 5 | 5420-01-045-3562 | 97403 | 13214E0033-1 |
| 2 | 6 | 5330-00-883-0233 | 96906 | MS27595441 |
| 2 | 7 | 5330-00-579-9675 | 96906 | MS28775-441 |
| 2 | 8 | 5330-00-450-6605 | 97403 | 13211E3142-4 |
| 2 | 9 | 5420-00-235-4684 | 97403 | 13211E7876 |
| 2 | 10 | 5340-00-872-7696 | 97403 | 13211E3147 |
| 2 | 11 | 5305-01-038-8424 | 97403 | 13211 IE7880-8 |
| 2 | 12 | 5305-00-904-4004 | 96906 | MS90727-209 |
| 2 | 13 | 5305-00-993-1849 | 96906 | MS35207-259 |
| 2 | 14 | 5330-00-618-4602 | 969d6 | MS28775451 |
| 2 | 15 | 5330-01-121-2778 | 96906 | MS27595451 |
| 2 | 16 | 5420-00-449-7172 | 97403 | 13214E0023-4 |
| 2 | 17 | 5330-00-729-6632 | 96906 | MS28775-244 |
| 2 | 18 | 5330-01-128-5202 | 96906 | MS27595-244 |
| 2 | 19 | 5420-00-186-3405 | 97403 | 13211E7867 |
| 2 | 20 | 2805-00-606-4396 | 97403 | 13211E3121-4 |
| 2 | 21 | 5420-01-120-3020 | 97403 | 13214E0025-2 |
| 2 | 22 | 5305-00-724-7875 | 96906 | MS51966-8 |
| 2 | 23 | 5420-01-121-1608 | 97403 | 13211E7875 |
| 3 | 1 | 5420-00-542-3151 | 97403 | 13211 E7851 |
| 3 | 2 | 5306-00-542-3126 | 97403 | 13211E7898 |
| 3 | 3 | 5420-00-542-3137 | 97403 | 13211E7890 |
| 3 | 4 | 5420-00-542-3143 | 97403 | 13211E7931 |
| 3 | 4.1 | 5420-00-060-7032 | 81349 | MILR52243 |
| 3 | 5 | 5420-00-542-3141 | 97403 | 13211E7893 |
| 3 | 6 | 5420-00-542-3140 | 97403 | 13211E7903 |
| 3 | 7 | 5420-00-542-3138 | 97403 | 13211E7883 |
| 3 | 8 | 5420-00-542-3145 | 97403 | 13211E7926 |
| 3 | 8.1 | 5420-00-060-7031 | 81349 | MILR52243 |
| 3 | 9 | 5420-00-542-3139 | 97403 | 13211E7882 |

CROSS-REFERENCE INDEXES
FIGURE AND ITEM NUMBER INDEX
STOCK NUMBER

| FIG. | ITEM | STOCK NUMBER | FSCM | PART NUMBER |
|------|------|------------------|-------|--------------|
| 3 | 10 | 5420-00-542-3148 | 97403 | 13211E7884 |
| 3 | 11 | 5420-00-542-3146 | 97403 | 13211E7885 |
| 3 | 12 | 5420-00-542-3147 | 97403 | 13211E7881 |
| 4 | 1 | 5420-00-542-3130 | 97403 | 13211E7858 |
| 4 | 2 | 5420-00-542-3115 | 97403 | 13211E7825 |
| 4 | 3 | 5420-00-542-3136 | 97403 | 13211E7820 |
| 4 | 3.1 | 5420-00-060-7032 | 81349 | MILR52243 |
| 4 | 4 | 2590-00-240-8935 | 97403 | 13211E7860 |
| 4 | 5 | 5420-00-542-3135 | 97403 | 13211E7861 |
| 4 | 6 | 5420-00-542-3134 | 97403 | 13211E7863 |
| 4 | 7 | 5420-00-542-3132 | 97403 | 13211E7857 |
| 4 | 8 | 5420-00-542-3133 | 97403 | 13211E7862 |
| 4 | 9 | 5420-00-060-7030 | 97403 | 13207E9894 |
| 4 | 10 | 5340-01-109-5663 | 97403 | 13211E7934 |
| 4 | 11 | | 97403 | 13211E7860-5 |
| 4 | 12 | 5310-00-809-8533 | 96906 | MS27183-23 |
| 4 | 13 | 4720-00-731-5332 | 98441 | A1150-4 |
| 4 | 14 | 5420-00-682-4517 | 97403 | 13211E7891 |
| 4 | 14.1 | 5420-00-060-7032 | 81349 | MILR52243 |
| 4 | 15 | 5420-00-542-3116 | 97403 | 13211E7813 |
| 4 | 16 | 5420-00-542-3123 | 97403 | 13211E7897 |
| 4 | 17 | 4720-00-731-5333 | 98441 | A1150-1 |
| 4 | 18 | 5305-00-922-7994 | 96906 | MS90728-189 |
| 4 | 19 | 5310-00-167-0826 | 88044 | AN960-1216 |
| 4 | 20 | 5310-00-584-7888 | 96906 | MS35338-51 |
| 4 | 21 | 5310-00-763-8921 | 96906 | MS51967-23 |
| 4 | 22 | 5305-00-947-4361 | 96906 | MS90728-198 |
| 4 | 23 | 5306-00-542-3126 | 97403 | 13211E7898 |
| 4 | 24 | 5420-00-542-3133 | 97403 | 13211E7862 |
| 4 | 25 | 5420-00-061-2873 | 81349 | MILR52243 |
| 4 | 26 | 5420-00-542-3131 | 97403 | 13211E7913 |
| 5 | 1 | 5310-00-763-8921 | 96906 | MS51967-23 |
| 5 | 2 | 5310-00-584-7888 | 96906 | M35338-51 |
| 5 | 3 | 2510-00-542-3118 | 97403 | 13211E7843 |
| 5 | 4 | 5420-00-542-3145 | 97403 | 13211E7926 |
| 5 | 4.1 | 5420-00-060-7031 | 81349 | MILR52243 |
| 5 | 5 | 5420-00-542-3154 | 97403 | 13211E7879 |
| 5 | 6 | 5420-00-542-3117 | 97403 | 13211E7837 |
| 5 | 7 | 5420-00-542-3136 | 97403 | 13211E7820 |
| 5 | 7.1 | 5420-00-060-7032 | 81349 | MILR52243 |
| 5 | 8 | 5420-00-059-9809 | 97403 | 13211E7929 |
| 5 | 9 | 5310-01-032-2318 | 96906 | MS51943-53 |
| 5 | 10 | 5310-00-983-8485 | 96906 | MS27183-30 |
| 5 | 11 | 5306-01-136-1186 | 97403 | 13211E7922 |
| 5 | 12 | 5365-01-011-5038 | 97403 | 13211E7923 |
| 5 | 13 | 5305-00-903-7298 | 96906 | MS90725-189 |
| 5 | 14 | 5420-00-542-3129 | 97403 | 13211E7856 |
| 5 | 15 | 5305-00-050-4212 | 96906 | MS90725-186 |
| 5 | 16 | 5305-00-947-4361 | 96906 | MS90728-198 |
| 5 | 17 | 5310-00-167-0826 | 88044 | AN960-1216 |
| 5 | 18 | 5420-00-542-3128 | 97403 | 13211E7836 |
| 5 | 19 | 5420-00-542-3124 | 97403 | 13211E7888 |
| 5 | 20 | 5306-00-542-3126 | 97403 | 13211E7898 |
| 5 | 21 | 5420-00-542-3125 | 97403 | 13211E7887 |
| 5 | 22 | 5420-00-542-3122 | 97403 | 13211E7886 |
| 5 | 23 | 5420-00-542-3127 | 97403 | 13211E7899 |

CROSS-REFERENCE INDEXES
FIGURE AND ITEM NUMBER INDEX
STOCK NUMBER

| FIG. | ITEM | STOCK NUMBER | FSCM | PART NUMBER |
|------|------|------------------|-------|----------------|
| 6 | 1 | 4730-01-281-7903 | 97403 | 13211E7849 |
| 6 | 2 | 4730-00-202-8469 | 96906 | MS51500A12 |
| 6 | 3 | 4730-01-017-0264 | 97403 | 13211E7932 |
| 6 | 4 | 5420-00-542-3153 | 97403 | 13211E7854 |
| 6 | 5 | 5315-00-298-1481 | 97906 | MS24665-357 |
| 6 | 6 | 5420-00-542-3152 | 97403 | 13211E7855 |
| 6 | 7 | 5315-01-016-6654 | 97403 | 13211E7855-3 |
| 6 | 8 | 5315-00-839-5821 | 96906 | MS24665-351 |
| 6 | 9 | 4730-01-169-2452 | 97403 | 13222E0986-3 |
| 6 | 10 | 4730-00-182-9086 | 97403 | 13211E3212 |
| 6 | 11 | 4720-00-986-6932 | 97403 | 13211 E7904-2 |
| 6 | 12 | 4730-00-202-8469 | 96906 | MS51500A12 |
| 6 | 13 | 5420-00-816-5649 | 97403 | 13211E7831 |
| 6 | 14 | 4730-00-257-0236 | 97403 | 13211E3213 |
| 6 | 15 | 5305-00-732-0511 | 96906 | MS90728-110 |
| 6 | 16 | 5310-00-809-5998 | 96906 | MS27183-18 |
| 6 | 17 | 5310-00-584-5272 | 96906 | MS35338-48 |
| 6 | 18 | 5310-01-070-2105 | 96906 | MS51967-14 |
| 6 | 19 | 5420-00-542-3149 | 97403 | 13211E7850 |
| 6 | 20 | 5420-00-542-3144 | 97403 | 13211E7846 |
| 6 | 20.1 | 5420-00-060-7031 | 81349 | MILR52243 |
| 7 | 1 | 5310-00-763-8921 | 96906 | MS51967-23 |
| 7 | 2 | 5310-00-584-7888 | 96906 | MS35338-51 |
| 7 | 3 | 5310-00-167-0826 | 88044 | AN960-1216 |
| 7 | 4 | 5365-01-128-5311 | 97403 | 13211 IE7852-3 |
| 7 | 5 | 5305-00-903-7298 | 97906 | MS90725-189 |
| 7 | 6 | 5305-00-958-8995 | 96906 | MS90725-188 |
| 7 | 7 | 5310-01-128-5158 | 97403 | 13211E7852-1 |
| 7 | 8 | 5305-00-071-2071 | 97906 | MS90728-115 |
| 7 | 9 | 5310-01-128-4123 | 97403 | 13211E7852-2 |
| 7 | 10 | 5420-00-496-9609 | 97403 | 13211E7819 |
| 7 | 11 | 5420-00-484-5726 | 97403 | 13211E7827 |
| 7 | 12 | 5310-01-070-2105 | 96906 | MS51967-14 |
| 7 | 13 | 5310-00-584-5272 | 96906 | MS3533848 |
| 7 | 14 | 5310-00-167-0823 | 88044 | AN960-816 |
| 7 | 15 | 5305-00-071-2072 | 96906 | MS90728-116 |
| 7 | 16 | 5420-01-065-6134 | 97403 | 13211E7829 |
| 7 | 17 | 2510-01-168-9886 | 97403 | 13211E7821 |
| 7 | 18 | 5305-00-071-2068 | 96906 | MS90728-112 |
| 7 | 19 | 5420-00-496-9607 | 97403 | 13211 E7816-1 |
| 7 | 20 | 5420-01-048-2241 | 97403 | 13211E7930 |
| 7 | 21 | 4730-01-142-8284 | 97403 | 13211E7835 |
| 7 | 22 | 5305-00-068-0502 | 96906 | MS90725-6 |
| 7 | 23 | 4730-01-159-4852 | 97403 | 13222E0986-6 |
| 7 | 24 | 4730-01-1594848 | 97403 | 13222E0986-5 |
| 7 | 25 | 4730-00-203-0030 | 81343 | 12-12-140239C |
| 7 | 26 | 4730-00-182-9086 | 97403 | 13211E3212 |
| 7 | 27 | 4730-01-009-0981 | 81343 | 12-12-140438S |
| 7 | 28 | 4730-01-1594853 | 97403 | 13222E0986-4 |
| 7 | 29 | 4730-00-288-9773 | 81343 | 12-12-140238 |
| 7 | 30 | | 97403 | 1321 IE7825-41 |
| 7 | 31 | 5340-01-010-0283 | 97403 | 13211E7936 |
| 7 | 32 | 5305-00-255-3843 | 96906 | MS90728-8 |
| 7 | 33 | 5310-00-823-8804 | 96906 | MS27183-9 |
| 7 | 34 | 5310-00-732-0559 | 96906 | MS51968-8 |
| 7 | 35 | 531000-637-9541 | 96906 | MS35338-46 |

CROSS-REFERENCE INDEXES
FIGURE AND ITEM NUMBER INDEX
STOCK NUMBER

| FIG. | ITEM | STOCK NUMBER | FSCM | PART NUMBER |
|------|------|------------------|-------|----------------|
| 7 | 36 | 5310-00-167-0821 | 88044 | AN960-616 |
| 7 | 37 | 4130-01-120-8494 | 97403 | 13211E7937 |
| 7 | 38 | 5305-00-781-7245 | 96906 | MS35191-323 |
| 7 | 39 | | 97403 | 1321 IE7814 |
| 7 | 39 | | 97403 | 13211E7826 |
| 7 | 40 | 2590-01-134-6541 | 97403 | 13211E7833 |
| 7 | 40 | 5420-01-121-1220 | 97403 | 13211IE7823 |
| 7 | 41 | 2590-01-109-5664 | 97403 | 13211E3139-2 |
| 7 | 42 | 5310-00-582-5965 | 97906 | MS35338-44 |
| 7 | 43 | 5310-00-761-6882 | 96906 | MS51967-2 |
| 7 | 44 | 5310-00-141-1795 | 88044 | AN960-416 |
| 7 | 45 | 4730-01-159-4847 | 97403 | 13222E0986-7 |
| 7 | 46 | 5340-01-129-9885 | 97403 | 13211E7848 |
| 7 | 47 | 5340-01-129-9884 | 97403 | 13211E7815 |
| 7 | 48 | 4730-01-126-3763 | 97403 | 13222E0986-1 |
| 7 | 49 | 5340-00-462-4143 | 97403 | 1321 IE3139-1 |
| 7 | 50 | 5340-01-129-9883 | 97403 | 13211E7839 |
| 8 | 1 | 5305-00-071-2518 | 96906 | MS90728-21 |
| 8 | 2 | 5310-00-141-1795 | 88044 | AN960-416 |
| 8 | 3 | 5365-01-130-0951 | 97403 | 13211E7824 |
| 8 | 4 | 5310-00-582-5965 | 96906 | MS35338-44 |
| 8 | 5 | 5310-00-761-6882 | 96906 | MS51967-2 |
| 8 | 6 | 5305-00-947-4354 | 96906 | MS90728-191 |
| 8 | 7 | 5310-00-167-0826 | 88044 | AN960-1216 |
| 8 | 8 | 5365-01-130-0950 | 97403 | 13211 IE7852-5 |
| 8 | 9 | 5310-00-584-7888 | 96906 | MS35338-51 |
| 8 | 10 | 5310-00-763-8921 | 96906 | MS51967-23 |
| 8 | 11 | 5305-00-071-2071 | 96906 | MS90728-115 |
| 8 | 12 | 5305-00-042-9479 | 96906 | MS90725-192 |
| 8 | 13 | 5365-01-130-0949 | 97403 | 13211 E7852-4 |
| 8 | 14 | 5305-00-958-8995 | 96906 | MS90725-188 |
| 8 | 15 | 5310-01-128-5158 | 97403 | 13211E7852-1 |
| 8 | 16 | 5305-00-922-7994 | 96906 | MS90728-189 |
| 8 | 17 | 5365-01-128-5311 | 97403 | 13211E7852-3 |
| 8 | 18 | 5420-01-048-2240 | 97403 | 13211E7940 |
| 8 | 18 | 5420-01-109-5665 | 97403 | 13211E7859 |
| 8 | 19 | 5305-01-071-2068 | 96906 | MS90728-112 |
| 8 | 20 | 5310-01-070-2105 | 96906 | MS51967-14 |
| 8 | 21 | 5310-00-584-5272 | 96906 | MS35338-48 |
| 8 | 22 | 5310-00-167-0823 | 88044 | AN960-816 |
| 8 | 23 | 5305-00-071-2072 | 96906 | MS90728-116 |
| 8 | 24 | 5420-01-062-5595 | 97403 | 13211 IE7828-2 |
| 8 | 25 | 5420-01-071-9058 | 97403 | 13211E7828-1 |
| 8 | 26 | 5420-00-484-5726 | 97403 | 1321 IE7827 |
| 8 | 27 | 5420-01-063-5650 | 97403 | 13211 t7816-2 |
| 8 | 27 | 5420-01-065-6134 | 97403 | 13211E7829 |
| 8 | 28 | 2510-01-168-9886 | 97403 | 13211E7821 |
| 8 | 29 | 2510-00-496-9608 | 97403 | 13211E7817-2 |
| 8 | 29 | 5420-00-495-6012 | 97403 | 13211E7817-1 |
| 8 | 30 | 5305-00-071-2073 | 96906 | MS90728-117 |
| 8 | 31 | 5420-00-131-4692 | 97403 | 13211E7818 |
| 8 | 32 | 4730-00-182-9086 | 97403 | 13211E3212 |
| 8 | 33 | 4730-01-159-4847 | 97403 | 13222E0986-7 |
| 8 | 34 | 4730-00-288-9773 | 81343 | 12-12-140238C |
| 8 | 35 | 5305-00-225-3843 | 96906 | MS90728-8 |
| 8 | 36 | 4730-01-142-8284 | 97403 | 13211IE7835 |

CROSS-REFERENCE INDEXES
FIGURE AND ITEM NUMBER INDEX
STOCK NUMBER

| FIG. | ITEM | STOCK NUMBER | FSCM | PART NUMBER |
|------|------|------------------|-------|-----------------|
| 8 | 37 | 4730-01-159-4850 | 97403 | 13222E0986-9 |
| 8 | 38 | 4730-00-203-0030 | 81343 | 12-12-140239C |
| 8 | 39 | 4730-01-009-0981 | 81343 | 12-12-140438S |
| 8 | 40 | 4730-01-159-4849 | 97403 | 13222E0968-11 |
| 8 | 41 | 5420-01-044-8351 | 97403 | 13211E7841 |
| 8 | 41 | 5945-00-131-4684 | 97403 | 13211E7847 |
| 8 | 42 | 4730-00-796-0496 | 96906 | MS51500A12S |
| 8 | 43 | 4730-01-159-4851 | 97403 | 13222E0986-12 |
| 8 | 44 | 5305-00-781-7245 | 96906 | MS35191-323 |
| 8 | 45 | 4730-01-120-8494 | 97403 | 13211E7937 |
| 8 | 46 | 5310-00-167-0821 | 88044 | AN960-616 |
| 8 | 47 | 5310-00-637-9541 | 96906 | MS35338-46 |
| 8 | 48 | 5310-00-732-0559 | 96906 | MS51568-8 |
| 8 | 49 | 5340-00-462-4143 | 97403 | 13211E3139-1 |
| 8 | 50 | | 97403 | 13211E7838 |
| 8 | 50 | | 97403 | 13211E7844 |
| 8 | 51 | 5305-00-903-3640 | 96906 | MS24667-78 |
| 8 | 52 | 5340-00-290-4503 | 96906 | MS 122088 |
| 9 | 1 | 5420-01-420-1684 | 97403 | 13230E4809 |
| 9 | 2 | 5340-01-416-3913 | 97403 | 13230E4896 |
| 9 | 3 | 5305-00-225-3845 | 96906 | B1821BH025C100N |
| 9 | 4 | 5310-00-929-1807 | 96906 | MS51922-2 |
| 9 | 5 | 5420-01-420-1685 | 97403 | 13230E4899 |
| 9 | 6 | 5420-01-419-9478 | 97403 | 13230E4808 |
| 9 | 7 | 5340-01-424-5907 | 97403 | 13230E6453 |
| 9 | 8 | 5305-00-916-2345 | 96906 | B1821BH075F200N |
| 9 | 9 | 5420-01-419-9485 | 97403 | 1323E4893 |
| 9 | 10 | 5420-01-419-9483 | 97403 | 1323E4894 |
| 9 | 11 | 5310-00-982-6810 | 96906 | MS21044N12 |
| 9 | 12 | 5305-00-948-0803 | 96906 | B1821BH075F300N |
| 9 | 13 | 5340-01-424-5908 | 97403 | 13230E6454 |
| 9 | 14 | 5340-01-424-5909 | 97403 | 13230E6455 |
| 9 | 15 | 2590-01-431-4438 | 97403 | 12463645 |
| 9 | 16 | 5420-01-419-9481 | 97403 | 13230E6447 |
| 9 | 17 | 4730-01-023-7729 | 59646 | MSS SP-03 |
| 9 | 18 | 4730-01-159-4849 | 97403 | 13222E0986-11 |
| 9 | 19 | 5305-00-068-0510 | 96906 | B1821BH038C100N |
| 9 | 20 | 5365-01-393-1243 | 97403 | 13230E4810 |

SUPPLEMENTAL CROSS-REFERENCE INDEXES

SECTION IV

TM5-5420-203-24P C02

CROSS-REFERENCE INDEXES

NATIONAL STOCK NUMBER INDEX

| STOCK NUMBER | FIG. | ITEM | STOCK NUMBER | FIG. | ITEM |
|------------------|------|------|--------------|------|------|
| 5420-00-182-8639 | 1 | 13 | | | |
| 5420-00-186-3405 | 2 | 19 | | | |
| 4730-00-203-0030 | 1 | 8 | | | |
| 5305-00-226-7767 | 1 | 14 | | | |
| 5420-00-235-4684 | 2 | 9 | | | |
| 5330-00-450-6605 | 2 | 8 | | | |
| 5340-00-542-3156 | 1 | 20 | | | |
| 5420-00-542-3192 | 1 | 21 | | | |
| 5330-00-579-9675 | 2 | 7 | | | |
| 5310-00-584-5272 | 1 | 15 | | | |
| 5420-00-606-4396 | 2 | 20 | | | |
| 2590-00-606-4474 | 2 | 4 | | | |
| 5330-00-618-4602 | 2 | 14 | | | |
| 5420-00-689-3127 | 2 | 3 | | | |
| 5330-00-729-6632 | 2 | 17 | | | |
| 4720-00-732-3418 | 1 | 1 | | | |
| 5340-00-872-7696 | 2 | 10 | | | |
| 5305-00-947-4353 | 1 | 22 | | | |
| 5305-00-958-8427 | 2 | 12 | | | |
| 5305-00-997-4152 | 2 | 11 | | | |
| 4730-01-009-0981 | 1 | 7 | | | |
| 5305-01-038-8424 | 2 | 11 | | | |
| 5420-01-045-3562 | 2 | 5 | | | |
| | 2 | 5 | | | |
| 3040-01-104-9108 | 1 | 16 | | | |
| | 1 | 16 | | | |
| 5420-01-121-1608 | 2 | 23 | | | |
| 5330-01-128-5202 | 2 | 18 | | | |
| 2590-01-312-0441 | 9A | | | | |
| 5305-01-340-1094 | 2 | 22 | | | |

CROSS-REFERENCE INDEXES

PART NUMBER INDEX

| CAGEC | PART NUMBER | STOCK NUMBER | FIG. | ITEM |
|-------|------------------|------------------|------|------|
| 88044 | AN565D4L3 | 5305-00-997-4152 | 2 | 11 |
| 80204 | B1821BH075C275N | 5305-00-947-4353 | 1 | 22 |
| 96906 | MS27595-244 | 5330-01-128-5202 | 2 | 18 |
| 96906 | MS27595-441 | | 2 | 6 |
| 96906 | MS27595-451 | | 2 | 15 |
| 96906 | MS28775-244 | 5330-00-729-6632 | 2 | 17 |
| 96906 | MS28775-441 | 5330-00-579-9675 | 2 | 7 |
| 96906 | MS28775-451 | 5330-00-618-4602 | 2 | 14 |
| 96906 | MS28776M2-41 | | 2 | 2 |
| 80205 | MS35338-48 | 5310-00-584-5272 | 1 | 15 |
| 96906 | MS51966-88 | 5305-01-340-1094 | 2 | 22 |
| 96906 | MS90726-109 | 5305-00-226-7767 | 1 | 14 |
| 96906 | MS90726-209 | 5305-00-958-8427 | 2 | 12 |
| 81349 | M83248/1-244 | | 2 | 17 |
| 81349 | M83248/1-441 | | 2 | 7 |
| 81349 | M83248/1-447 | | 2 | 20A |
| 81349 | M83248/1-451 | | 2 | 14 |
| 81343 | 12-12-12 140438S | 4730-01-009-0981 | 1 | 7 |
| 19207 | 12326493-3 | | 2 | 8 |
| 19207 | 12326495-3 | | 2 | 20 |
| 19207 | 12326514-3 | | 2 | 4 |
| 97403 | 13211E3121-4 | 5420-00-606-4396 | 2 | 20 |
| 97403 | 13211E3142-4 | 5330-00-450-6605 | 2 | 8 |
| 97403 | 13211E3144-4 | 2590-00-606-4474 | 2 | 4 |
| 97403 | 13211E3147 | 5340-00-872-7696 | 2 | 10 |
| 97403 | 13211E7867 | 5420-00-186-3405 | 2 | 19 |
| 97403 | 13211E7868 | 5420-00-689-3127 | 2 | 3 |
| 97403 | 13211E7874 | 5340-00-542-3156 | 1 | 20 |
| 97403 | 13211E7875 | 5420-01-121-1608 | 2 | 23 |
| 97403 | 13211E7876 | 5420-00-235-4684 | 2 | 9 |
| 97403 | 13211E7880 | 5420-01-104-9108 | 1 | 16 |
| 97403 | 13211E7880-1 | 3040-01-104-9108 | 1 | 16 |
| 97403 | 13211E7880-8 | 5305-01-038-8424 | 2 | 11 |
| 97403 | 13211E7892 | 5420-00-182-8639 | 1 | 13 |
| 97403 | 13211E7905-14 | | 1 | 9 |
| 97403 | 13211E7935 | 5420-00-542-3192 | 1 | 21 |
| 97403 | 13214E0033-1 | 5420-01-045-3562 | 2 | 5 |
| | | | 2 | 5 |
| 97403 | 13228E1971 | 2590-01-312-0441 | 9A | |
| 21450 | 454112 | 4730-00-203-0030 | 1 | 8 |
| 97907 | 981089 | 4720-00-732-3418 | 1 | 1 |

By Order of the Secretary of the Army:

Official:

CARL E. VUONO
General, United States Army
Chief of Staff

WILLIAM J. MEEHAN II
Brigadier General, United States Army
The Adjutant General

Distribution:

To be distributed in accordance with DA Form 12-37R, Direct Support and General Support requirements for Launcher, Bridge, Tank, M46A5/M60A1 (AVLB).

☆ U. S. GOVERNMENT PRINTING OFFICE: 1989 643-025/80131

RECOMMENDED CHANGES TO EQUIPMENT TECHNICAL PUBLICATIONS



THEN... JOT DOWN THE DOPE ABOUT IT ON THIS FORM. CAREFULLY TEAR IT OUT. FOLD IT AND DROP IT IN THE MAIL.

SOMETHING WRONG WITH THIS PUBLICATION?

FROM: (PRINT YOUR UNIT'S COMPLETE ADDRESS)

Your mailing address

DATE SENT

Date you fill out this form.

PUBLICATION NUMBER

TM5-5420-203-24P

PUBLICATION DATE

MARCH 1988

PUBLICATION TITLE

BRIDGE, ARMORED-VEHICLE LAUNCHED

BE EXACT PIN-POINT WHERE IT IS

| PAGE NO | PARA-GRAPH | FIGURE NO | TABLE NO |
|---------|------------|-----------|----------|
| 2-1 | | 2 | |
| 5-1 | | 5 | |
| 8-1 | | 8 | |

IN THIS SPACE TELL WHAT IS WRONG AND WHAT SHOULD BE DONE ABOUT IT:

ITEM 10 WILL NOT CONNECT TO ITEM (B) AS SHOWN. ITEM 8 DRAWN WRONG

ITEM 17 NOT SHOWN IN PROPER PLACE

ITEM 2 PARTS LIST. SMR CODE MISSING

SAMPLE

PRINTED NAME GRADE OR TITLE AND TELEPHONE NUMBER

John Smith, Cpt 800-497-9602

SIGN HERE

John Smith

FILL IN YOUR
UNIT'S ADDRESS



DEPARTMENT OF THE ARMY

Your mailing address

FOLD BACK

SAMPLE

POSTAGE AND FEES PAID
DEPARTMENT OF THE ARMY
DOD 314



TEAR ALONG PERFORATED LINE

OFFICIAL BUSINESS
PENALTY FOR PRIVATE USE \$300

Commander, U.S. Army Tank-Automotive
Command
Attn: AMSTA-MB
Warren, Michigan 48397-5000

RECOMMENDED CHANGES TO EQUIPMENT TECHNICAL PUBLICATIONS



THEN JOT DOWN THE DOPE ABOUT IT ON THIS FORM. CAREFULLY TEAR IT OUT. FOLD IT AND DROP IT IN THE MAIL.

SOMETHING WRONG WITH THIS PUBLICATION?

FROM (PRINT YOUR UNIT'S COMPLETE ADDRESS)

DATE SENT

| | | |
|---|--------------------------------------|--|
| PUBLICATION NUMBER TM5-5420-203-24P | PUBLICATION DATE November 8, 1988 | PUBLICATION TITLE BRIDGE, ARMORED-VEHICLE LAUNCHED |
|---|--------------------------------------|--|

| BE EXACT PIN-POINT WHERE IT IS | | | | IN THIS SPACE TELL WHAT IS WRONG AND WHAT SHOULD BE DONE ABOUT IT: |
|--------------------------------|------------|-----------|----------|--|
| PAGE NO | PARA-GRAPH | FIGURE NO | TABLE NO | |
| | | | | |

| | |
|--|-----------|
| PRINTED NAME GRADE OR TITLE AND TELEPHONE NUMBER | SIGN HERE |
|--|-----------|

FILL IN YOUR
UNIT'S ADDRESS



FOLD BACK

DEPARTMENT OF THE ARMY

OFFICIAL BUSINESS
PENALTY FOR PRIVATE USE \$300

POSTAGE AND FEES PAID
DEPARTMENT OF THE ARMY
DOD 314



TEAR ALONG PERFORATED LINE

Commander
U.S. Army Tank-Automotive Command
ATTN: AMSTA-MB
Warren, Michigan 48397-5000

RECOMMENDED CHANGES TO EQUIPMENT TECHNICAL PUBLICATIONS



THEN JOT DOWN THE DOPE ABOUT IT ON THIS FORM. CAREFULLY TEAR IT OUT. FOLD IT AND DROP IT IN THE MAIL.

SOMETHING WRONG WITH THIS PUBLICATION?

FROM (PRINT YOUR UNIT'S COMPLETE ADDRESS)

DATE SENT

PUBLICATION NUMBER

TM5-5420-203-24P

PUBLICATION DATE

November 8, 1988

PUBLICATION TITLE

BRIDGE, ARMORED-VEHICLE LAUNCHED

BE EXACT PIN-POINT WHERE IT IS

PAGE
NO

PARA-
GRAPH

FIGURE
NO

TABLE
NO

IN THIS SPACE TELL WHAT IS WRONG AND WHAT SHOULD BE DONE ABOUT IT:

PRINTED NAME GRADE OR TITLE AND TELEPHONE NUMBER

SIGN HERE

DA FORM 2028-2
1 JUL 79

PREVIOUS EDITIONS ARE OBSOLETE.

P.S.--IF YOUR OUTFIT WANTS TO KNOW ABOUT YOUR RECOMMENDATION MAKE A CARBON COPY OF THIS AND GIVE IT TO YOUR HEADQUARTERS

FILL IN YOUR
UNIT'S ADDRESS



FOLD BACK

DEPARTMENT OF THE ARMY

OFFICIAL BUSINESS
PENALTY FOR PRIVATE USE \$300

POSTAGE AND FEES PAID
DEPARTMENT OF THE ARMY
DOD 314



TEAR ALONG PERFORATED LINE

Commander
U.S. Army Tank-Automotive Command
ATTN: AMSTA-MB
Warren, Michigan 48397-5000

RECOMMENDED CHANGES TO EQUIPMENT TECHNICAL PUBLICATIONS

SOMETHING WRONG WITH THIS PUBLICATION?



THEN... JOT DOWN THE DOPE ABOUT IT ON THIS FORM. CAREFULLY TEAR IT OUT. FOLD IT AND DROP IT IN THE MAIL.

FROM (PRINT YOUR UNIT'S COMPLETE ADDRESS)

DATE SENT

PUBLICATION NUMBER

TM 5-5420-203-24P

PUBLICATION DATE

November 8, 1988

PUBLICATION TITLE

BRIDGE, ARMORED-VEHICLE LAUNCHED

BE EXACT PIN-POINT WHERE IT IS

| PAGE NO | PARA-GRAPH | FIGURE NO | TABLE NO |
|---------|------------|-----------|----------|
| | | | |

IN THIS SPACE TELL WHAT IS WRONG AND WHAT SHOULD BE DONE ABOUT IT:

PRINTED NAME GRADE OR TITLE AND TELEPHONE NUMBER

SIGN HERE

THE METRIC SYSTEM AND EQUIVALENTS

LINEAR MEASURE

1 Centimeter = 10 Millimeters = 0.01 Meters = 0.3937 Inches
 1 Meter = 100 Centimeters = 1000 Millimeters = 39.37 Inches
 1 Kilometer = 1000 Meters = 0.621 Miles

WEIGHTS

1 Gram = 0.001 Kilograms = 1000 Milligrams = 0.035 Ounces
 1 Kilogram = 1000 Grams = 2.2 Lb.
 1 Metric Ton = 1000 Kilograms = 1 Megagram = 1.1 Short Tons

LIQUID MEASURE

1 Milliliter = 0.001 Liters = 0.0338 Fluid Ounces
 1 Liter = 1000 Milliliters = 33.82 Fluid Ounces

SQUARE MEASURE

1 Sq. Centimeter = 100 Sq. Millimeters = 0.155 Sq. Inches
 1 Sq. Meter = 10,000 Sq. Centimeters = 10.76 Sq. Feet
 1 Sq. Kilometer = 1,000,000 Sq. Meters = 0.386 Sq. Miles

CUBIC MEASURE

1 Cu. Centimeter = 1000 Cu. Millimeters = 0.06 Cu. Inches
 1 Cu. Meter = 1,000,000 Cu. Centimeters = 35.31 Cu. Feet

TEMPERATURE

$\frac{5}{9}(^{\circ}\text{F} - 32) = ^{\circ}\text{C}$
 212° Fahrenheit is equivalent to 100° Celsius
 90° Fahrenheit is equivalent to 32.2° Celsius
 32° Fahrenheit is equivalent to 0° Celsius
 $\frac{9}{5}^{\circ}\text{C} + 32 = ^{\circ}\text{F}$

APPROXIMATE CONVERSION FACTORS

| TO CHANGE | TO | MULTIPLY BY |
|------------------------|----------------------|-------------|
| Inches | Centimeters | 2.540 |
| Feet | Meters | 0.305 |
| Yards | Meters | 0.914 |
| Miles | Kilometers | 1.609 |
| Square Inches | Square Centimeters | 6.451 |
| Square Feet | Square Meters | 0.093 |
| Square Yards | Square Meters | 0.836 |
| Square Miles | Square Kilometers | 2.590 |
| Acres | Square Hectometers | 0.405 |
| Cubic Feet | Cubic Meters | 0.028 |
| Cubic Yards | Cubic Meters | 0.765 |
| Fluid Ounces | Milliliters | 29.573 |
| Pints | Liters | 0.473 |
| Quarts | Liters | 0.946 |
| Gallons | Liters | 3.785 |
| Ounces | Grams | 28.349 |
| Pounds | Kilograms | 0.454 |
| Short Tons | Metric Tons | 0.907 |
| Pound-Feet | Newton-Meters | 1.356 |
| Pounds per Square Inch | Kilopascals | 6.895 |
| Miles per Gallon | Kilometers per Liter | 0.425 |
| Miles per Hour | Kilometers per Hour | 1.609 |

| TO CHANGE | TO | MULTIPLY BY |
|----------------------|------------------------|-------------|
| Centimeters | Inches | 0.394 |
| Meters | Feet | 3.280 |
| Meters | Yards | 1.094 |
| Kilometers | Miles | 0.621 |
| Square Centimeters | Square Inches | 0.155 |
| Square Meters | Square Feet | 10.764 |
| Square Meters | Square Yards | 1.196 |
| Square Kilometers | Square Miles | 0.386 |
| Square Hectometers | Acres | 2.471 |
| Cubic Meters | Cubic Feet | 35.315 |
| Cubic Meters | Cubic Yards | 1.308 |
| Milliliters | Fluid Ounces | 0.034 |
| Liters | Pints | 2.113 |
| Liters | Quarts | 1.057 |
| Liters | Gallons | 0.264 |
| Grams | Ounces | 0.035 |
| Kilograms | Pounds | 2.205 |
| Metric Tons | Short Tons | 1.102 |
| Newton-Meters | Pound-Feet | 0.738 |
| Kilopascals | Pounds per Square Inch | 0.145 |
| Kilometers per Liter | Miles per Gallon | 2.354 |
| Kilometers per Hour | Miles per Hour | 0.621 |

